

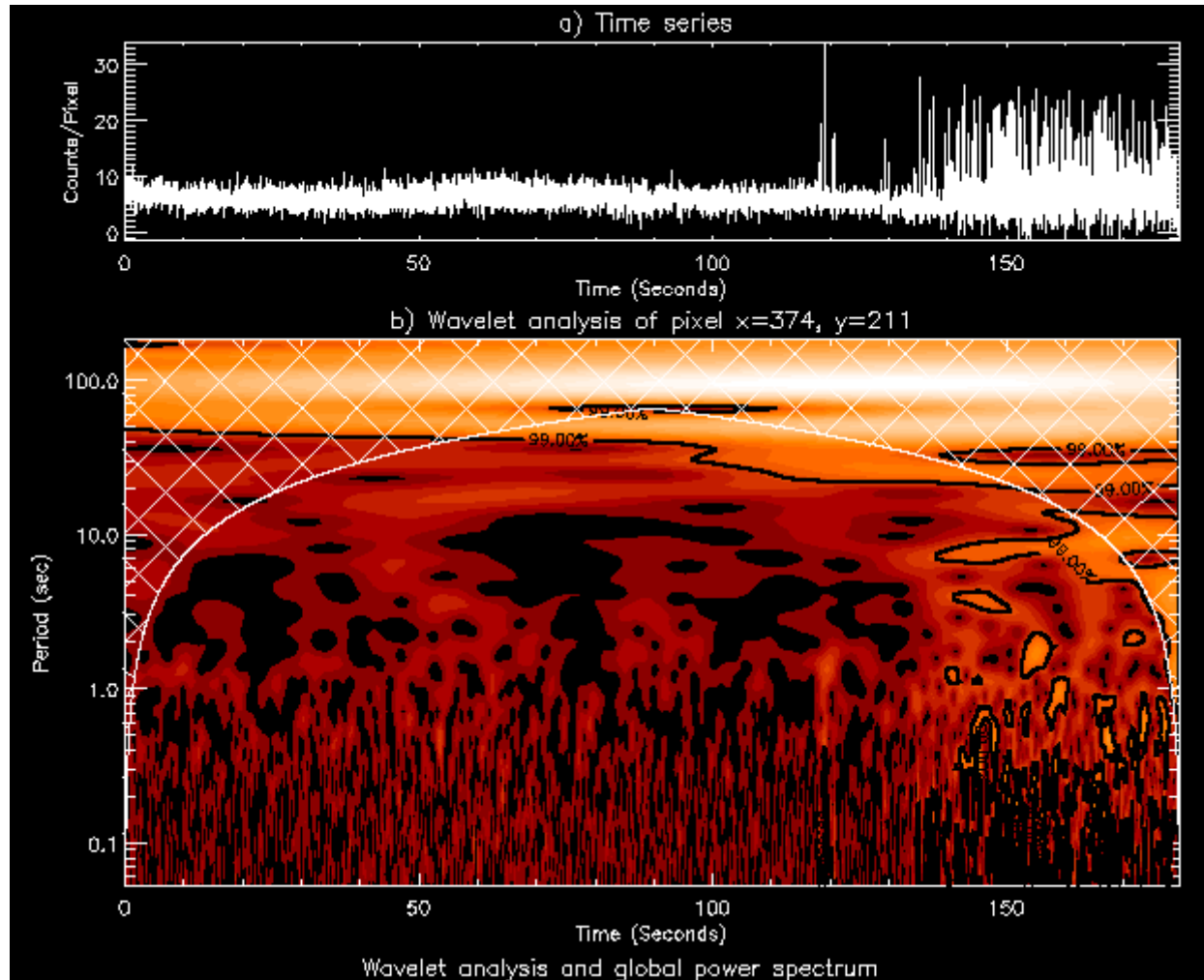
First results from SECIS observations of the 2001 total Solar eclipse



Thanassis Katsiyannis

Royal Observatory of Belgium

Continuous Wavelet Analysis of $x=374$ $y=211$

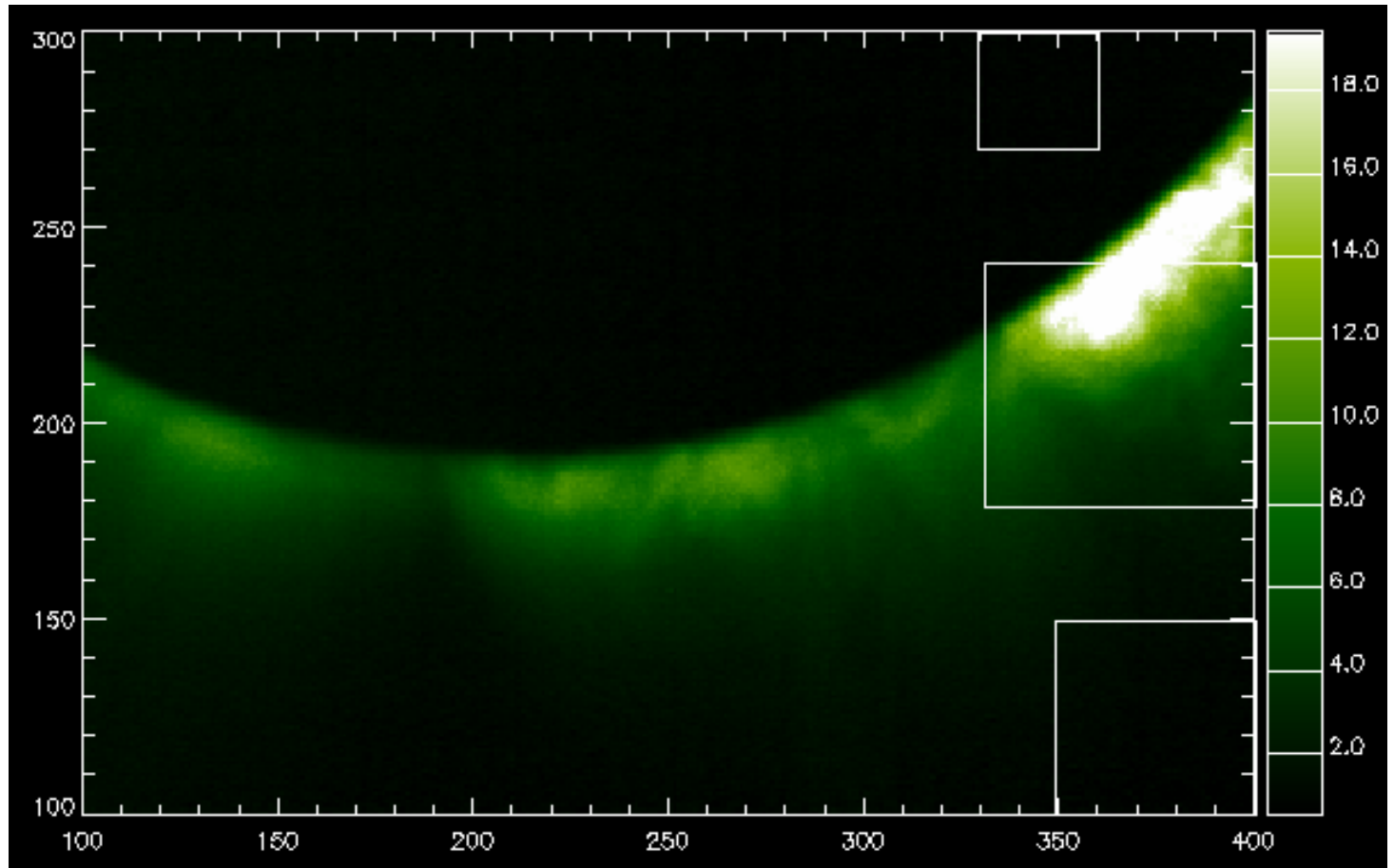




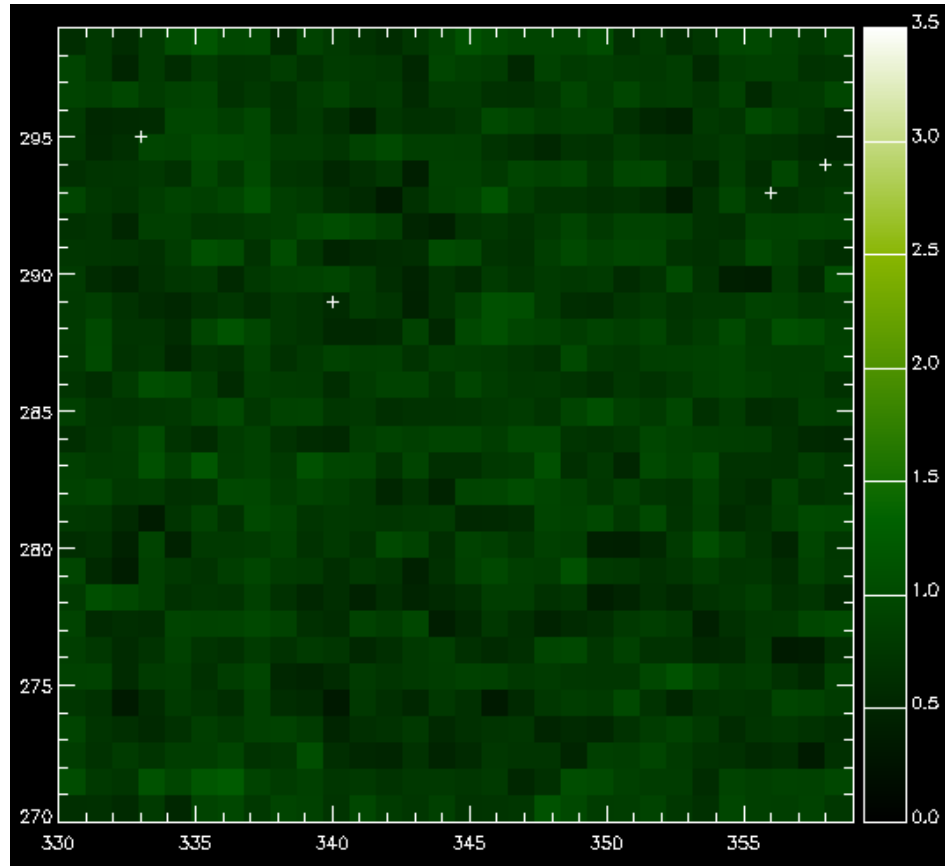
Automated Detection of Oscillations

- All values of coefficients falling within the COI are discarded
- Only areas with 99% confidence level or higher are taken into account
- All oscillations lasting less than the time length of three periods were discarded.

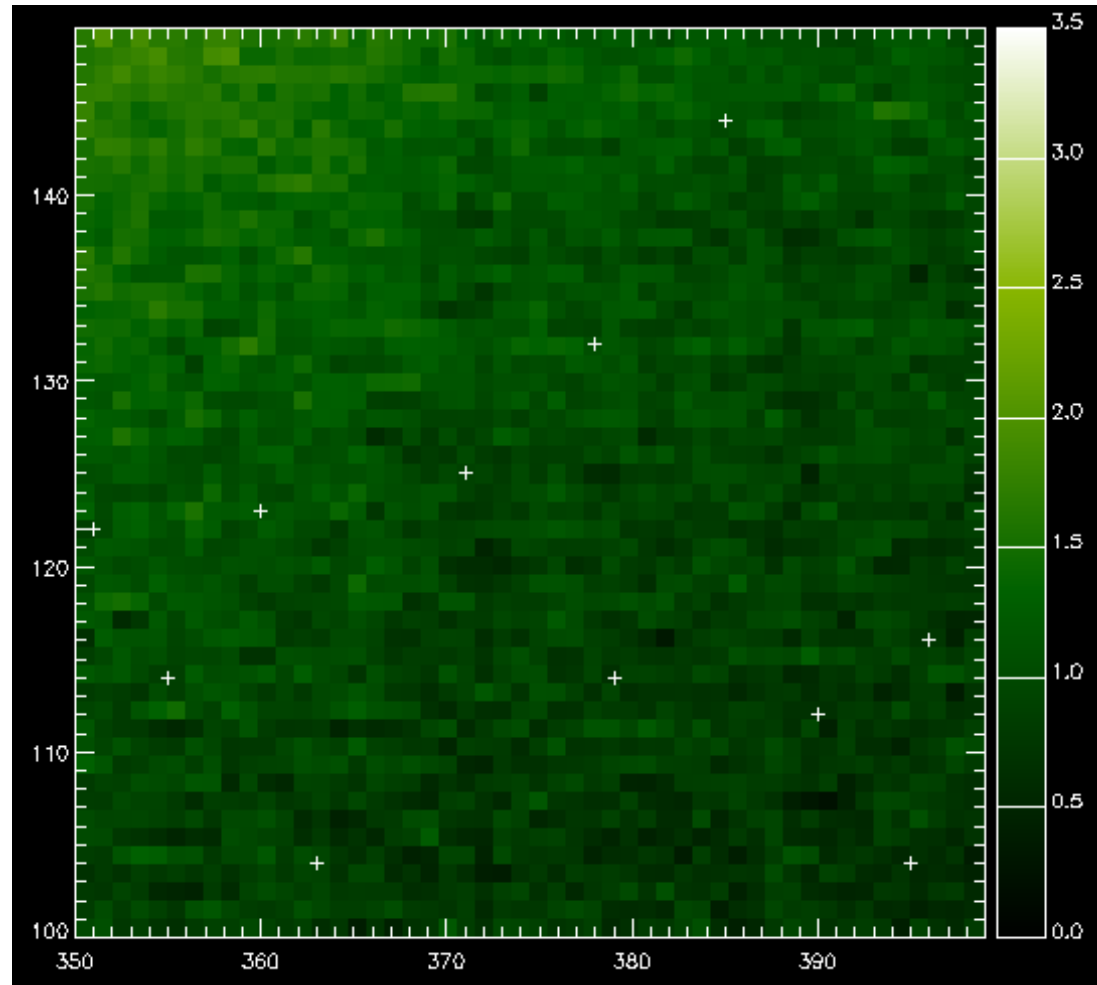
Detection of Atmospheric and Instrumental Effects



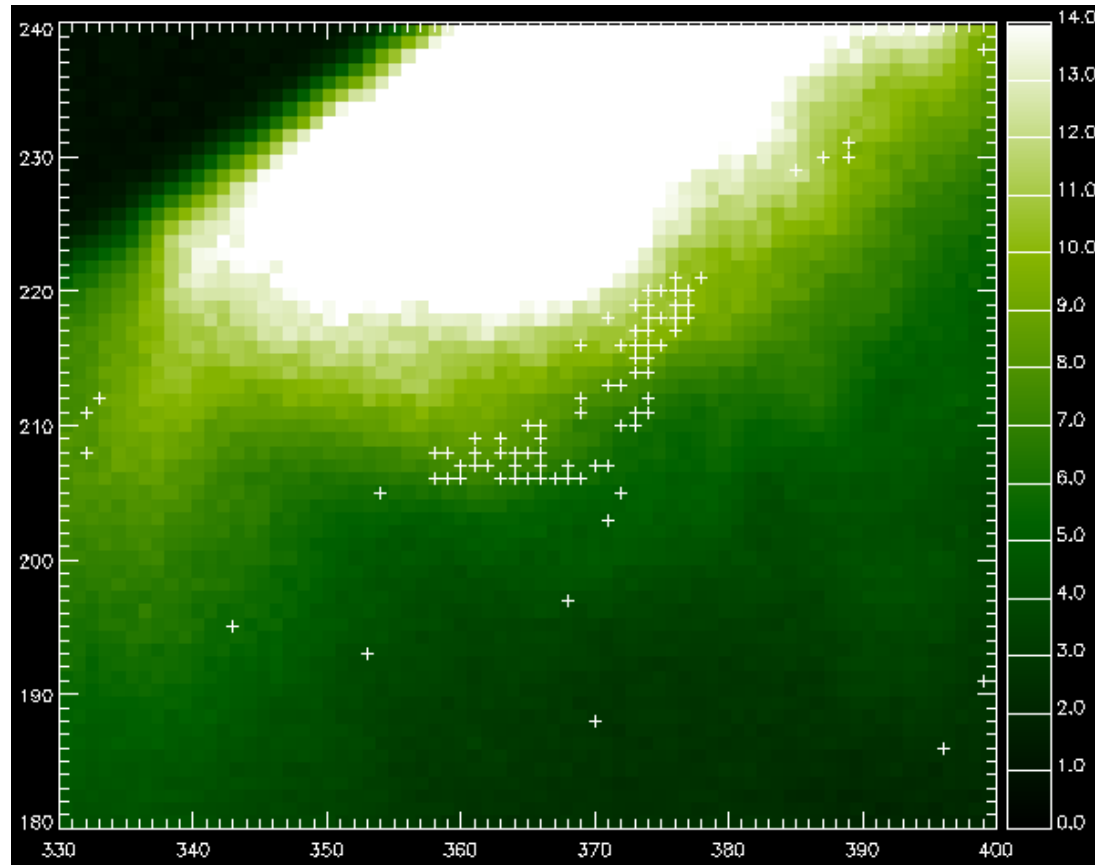
Moon Area Detections



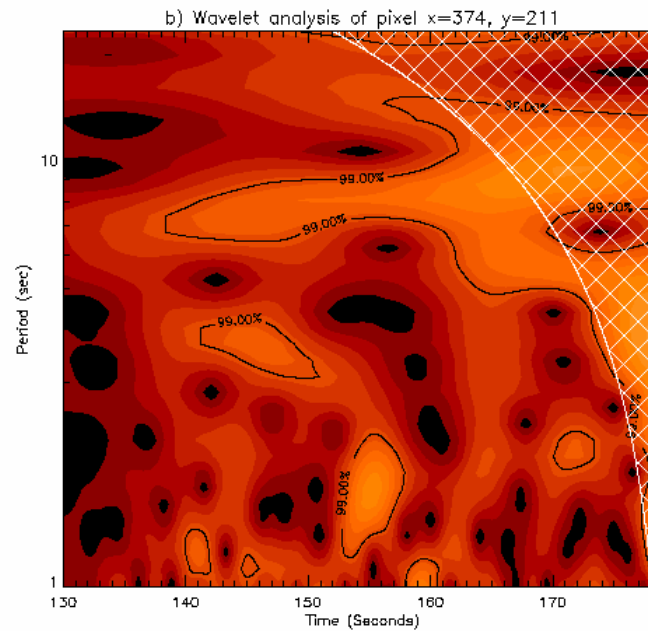
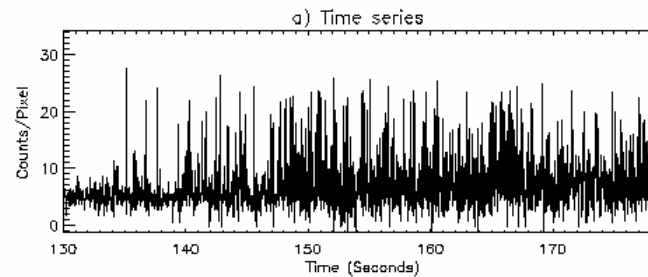
Outer Corona Detections



Lower Corona Detections



Detection of Intensity oscillations of $x=374$, $y=211$





Future Work

- Correcting of high frequency instabilities introduced by the electronics
- Study kinematical characteristics of the detections
- Analysis of satellite observations of AR 9513 during the eclipse