

Nonlinear force-free modelling: influence of inaccuracies in the measured magnetic vector

T. Wiegelmann¹, L. Yelles Chaouche¹, S. K. Solanki^{1,2}, and A. Lagg¹

¹ Max-Planck-Institut für Sonnensystemforschung, Max-Planck-Straße 2, 37191 Katlenburg-Lindau, Germany
e-mail: wiegelmann@mps.mpg.de

² School of Space Research, Kyung Hee University, Yongin, Gyeonggi 446-701, Korea

Received 2 July 2009 / Accepted 2 December 2009

ABSTRACT

Context. Solar magnetic fields are regularly extrapolated into the corona starting from photospheric magnetic measurements that can be affected by significant uncertainty.

Aims. We study how inaccuracies introduced into the maps of the photospheric magnetic vector by the inversion of ideal and noisy Stokes parameters influence the extrapolation of nonlinear force-free magnetic fields.

Methods. We compute nonlinear force-free magnetic fields based on simulated vector magnetograms, by the inversion of Stokes profiles that were computed by a 3-D radiation MHD simulation snapshot. These extrapolations are compared with extrapolations that originate directly in the field in the MHD simulations, which is our reference. We investigate how line formation and instrumental effects such as noise, limited spatial resolution, and the effect of employing a filter instrument influence the resulting magnetic field structure. The comparison is performed qualitatively by visually inspecting the magnetic field distribution and quantitatively by different metrics.

Results. The reconstructed field is most accurate if ideal Stokes data are inverted and becomes less accurate if instrumental effects and noise are included. The results demonstrate that the nonlinear force-free field extrapolation method tested here is relatively insensitive to the effects of noise in measured polarization spectra at levels consistent with present-day instruments.

Conclusions. Our results show that we can reconstruct the coronal magnetic field as a nonlinear force-free field from realistic photospheric measurements with an accuracy of a few percent, at least in the absence of sunspots.

Key words. Sun: corona – magnetic fields – Sun: photosphere

1. Introduction

Except for a few individual cases, e.g., in newly developed active regions (Solanki et al. 2003), we are unable to directly measure the full magnetic vector in the solar corona at high resolution and we have to rely on extrapolations from photospheric measurements. Wiegelmann et al. (2005b) compared the direct magnetic field measurements of Solanki et al. (2003) with extrapolations from the photosphere. This work highlighted the importance of field-aligned electric currents to an accurate magnetic field reconstruction and the need to have photospheric vector magnetograms as boundary data. The photospheric data are affected by a number of inadequacies, however, whose influence on the quality of the extrapolations needs to be studied in detail. Firstly, the magnetic field in the photosphere is far from being force-free, (see, e.g., Metcalf et al. 1995), which can cause significant errors if used directly for a force-free magnetic field extrapolation (see Metcalf et al. 2008, for details). These errors can, however, be greatly reduced by appropriate preprocessing (Wiegelmann et al. 2006b). Another well-known problem is that the noise level of the magnetic field transverse to the line of sight is typically more than one order of magnitude higher than for the longitudinal component deduced from the Stokes parameters of Zeeman split spectral lines. An additional complication is caused by vector magnetic field measurements performed far away from the disk centre, where the vertical and line-of-sight field are far apart

(see Gary & Hagyard 1990, for details), for which one has to also use the transverse field to derive the vertical field. Venkatakrishnan & Gary (1989) showed that the increasing noise caused by using the transverse field is tolerable for heliocentric distances shorter than 50° . For our investigations, we assume that the observations were performed close to the disk center, where the vertical magnetic field is almost identical to the line-of-sight field and the horizontal component is almost identical to the transverse field. Consequently, our results are not directly applicable to regions observed at heliocentric distances greater than about 50° , where the noise in the transverse field influences significantly the accuracy of the vertical field. Furthermore, high resolution vector magnetographs such as Hinode/SOT have a limited field of view, which often does not allow us to derive the horizontal magnetic field across an entire active region. The influence of these effects on the accuracy of nonlinear force-free extrapolations was investigated by DeRosa et al. (2009). Less often considered effects introduced by extracting the field from the Stokes parameters are intrinsically uncertain. For instance, the measured Stokes profiles that formed in a highly dynamic atmosphere with a complex thermal and magnetic structure, while inversion methods that are normally applied impose rather restrictive assumptions (e.g., Milne-Eddington atmosphere, Auer et al. 1977). In addition, because of the spatially fluctuating height of formation of the lines, the obtained magnetic vector refers to different

heights in the atmosphere at different locations. In extrapolation methods, one has to assume the boundary condition to be a single, often planar, height. Finally, instrumental limitations impose restrictions, such as limited spatial and spectral resolution, spectral sampling (in particular for filter instruments), and noise.

We investigate how the extrapolated coronal magnetic field is influenced by noise and other instrumental artifacts (spatial resolution, limited spectral sampling), as well as the general limitations of the inversion of the measured Stokes profiles. To do so, we use the results of 3D radiation MHD simulations. We compute synthetic lines from the data cubes of the relevant physical quantities, add noise and apply the influence of typical instrument parameters. Finally we invert these artificial measurements to derive synthetic vector magnetograms, which are then used as boundary conditions for a nonlinear force-free magnetic field extrapolation. We compare the reconstruction from ideal data, taken directly from the MHD simulations, with extrapolations starting from data containing instrumental effects and noise of different levels of severity. Our aim is to investigate how different instrumental effects and noise influence a nonlinear force-free magnetic field extrapolation. Besides generally testing the influence of reduced spatial resolution on the photospheric magnetic field data, we also consider to the extent to which the properties of specific high resolution space instruments affect the quality of the extrapolations. The two instruments we consider are the Spectro-Polarimeter (SP) on the Solar Optical Telescope (SOT) on the Hinode spacecraft (Shimizu 2004; Tsuneta et al. 2008) and the Polarimetric and Helioseismic Imager (PHI) to fly on the Solar Orbiter mission. Instruments with lower spatial resolution, such as the Helioseismic Magnetic Imager (HMI) were not considered, since the number of pixels across the MHD simulation box are then rather small, making a meaningful test more improbable.

2. Method

2.1. Setup of the test case

We start with 3-D radiation MHD simulations resulting from the MURAM code (see Vögler et al. 2005, for details). The particular snapshot considered here was taken from a bipolar run and harbours equal amounts of magnetic flux of both polarities. The configuration has an average field strength of 150 G at the spatially averaged continuum optical depth $\langle\tau_{5000}\rangle = 1$ at 5000 Å. The horizontal dimensions of the simulation domain are 6 × 6 Mm and 1.4 Mm in the vertical direction. The original resolution is 20 km in the horizontal directions and 14 km in the vertical direction. Similar snapshots were also used by Khomenko et al. (2005b) for the investigation of magnetoconvection of mixed-polarity quiet-Sun regions and compared with measured Stokes profiles by Khomenko et al. (2005a).

Because of the limited height-range of the MHD simulation, we first extrapolate the field from the magnetic vector obtained from the simulations at a fixed geometric height (see Fig. 1). This height, Z_{ref} , must be chosen with care since the extrapolation starting from the magnetic field vector at Z_{ref} is employed as a reference against which all others are compared. To avoid introducing a bias it must correspond to a suitably weighted average height of formation of the spectral line used for inversion, e.g., Fe I 6173.3 Å. Since different regions in the MHD-simulation may have different formation height ranges, we chose a criterion that selected the reference height obtained by finding the highest correlation between the magnetic field strength taken directly

from the MHD simulation and from inversion of the Stokes profiles obtained under ideal conditions (very high spectral and spatial resolutions and no noise).

This extrapolation is used as a reference against which other extrapolations are compared. These later ones use magnetic vector maps that are obtained from the inversion of synthetic Stokes profiles.

Two spectral lines are considered, the very widely used Fe I 6302.5 Å (Landé factor $g = 2.5$) line, employed by the Advanced Solar Polarimeter and the spectropolarimeter on the Hinode spacecraft, and Fe I 6173.3 Å ($g = 2.5$), which was selected for the Helioseismic and Magnetic Imager (HMI) on the Solar Dynamics Observatory (SDO) and for the Polarimetric and Helioseismic Imager on the Solar Orbiter mission (SO/PHI). In both cases Z_{ref} was found to be located approximately at 150 km above $\langle\tau_{5000}\rangle = 1$.

Using the STOPRO code (Solanki 1987; Frutiger et al. 2000), we then compute the Stokes parameters of these widely used spectral lines. We restrict ourselves to conditions at the solar disk center. These synthetic data are then either directly inverted or inverted after degrading the data by introducing noise and lowering the spatial and/or the spectral resolution. A list of all the considered cases is presented in Table 1 and discussed in Sect. 3. The inversion is carried out for each spectral line individually. The inverted magnetic field vector is then taken as the starting point for a nonlinear force-free extrapolation.

For comparison, we also compute a potential field from the results of the MHD-simulations at Z_{ref} , which requires only the vertical component of the photospheric magnetic field. In addition, we compute nonlinear force-free extrapolations with a horizontal spatial resolution that is lower by a factor of two and four, respectively, than the original MHD model.

2.2. Description of the inversion code

The inversion code HeLIx developed by Lagg et al. (2004) is based on fitting the observed Stokes profiles with synthetic ones obtained from an analytic solution of the Unno-Rachkovsky equations (Unno 1956; Rachkovsky 1967) in a Milne-Eddington atmosphere (see e.g., Landi degl'Innocenti 1992). These synthetic profiles are functions of the magnetic field strength $|B|$, both its inclination and azimuth (with respect to the line of sight), the vertical velocity, the Doppler width, the damping constant, the ratio of the line center to the continuum opacity, and the slope of the source function with respect to optical depth. We assume the filling factor to be unity. Any possible magnetic fine structure within one pixel consisting of a field-free and a magnetic area is smeared out, and the inversion returns the magnetic field vector averaged over the considered pixel. Since the extrapolations are performed on the same pixel scale as the inversions, they must operate with the pixel-averaged magnetic field vector. Setting the filling factor to unity during the inversion process enhances its robustness and reliability. The atmospheric parameters that ensure the minimum of the merit function are obtained using a very reliable genetic algorithm (Charbonneau 1995). The genetic algorithm was extensively tested with synthetic spectra from MHD simulations and the results compared with response-function-averaged physical parameters (e.g., magnetic field strength, inclination, azimuth, line-of-sight velocity). The results of the test indicate that the genetic algorithm retrieves the global minimum of the merit function with high reliability. The parameter sets are chosen to simulate the Hinode/SOT and the future SO/PHI instruments.

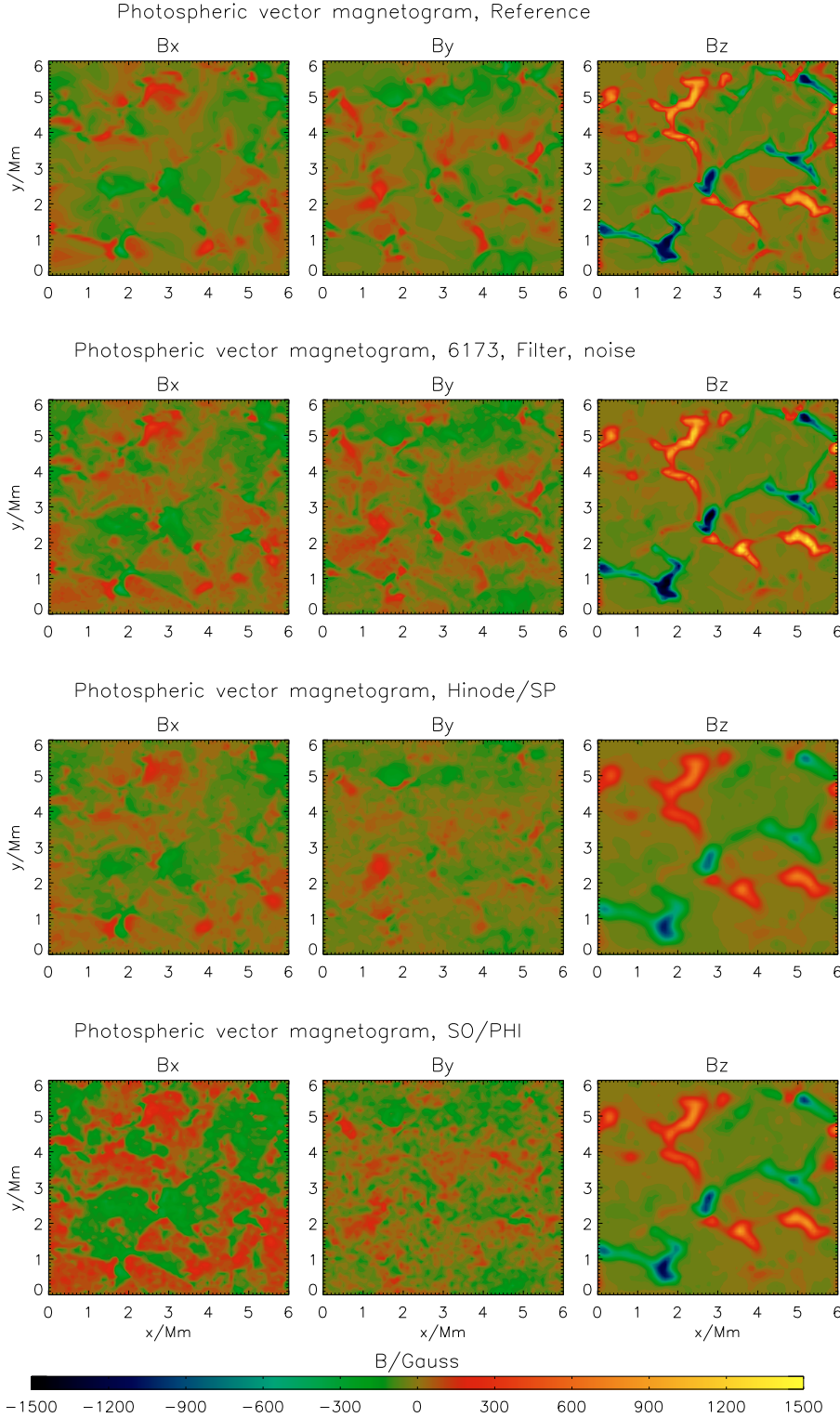


Fig. 1. B_x, B_y, B_z maps at a fixed reference height Z_{ref} approximately 150 km above the average $\langle \tau_{5000} \rangle = 1$. The top panel contains the original maps from the MHD data, which are used as a reference. The second panel shows the results of an inversion with Filter and noise. The third and bottom panels correspond to simulated inversions from Hinode/SP and SO/PHI, respectively. For a quantitative comparison see Table 1.

2.3. Hinode SOT Spectro-Polarimeter

The Spectro-Polarimeter (SP; Lites et al. 2007) is part of the focal-plane package of the 50 cm Solar Optical Telescope (SOT) onboard the Hinode spacecraft. It observes the line pair Fe I 6302.5 and 6301.5 Å. Here we restrict ourselves to 6302.5 Å. The spatial resolution at the diffraction limit of the telescope's primary mirror is about 0.32'' at 6302.5 Å, which

corresponds to 230 km on the Sun. The size of a detector pixel corresponds to approximately 110 km on the Sun in the spatial direction. The spectral resolution is 30 mÅ and the spectral sampling is 21 mÅ. We used Gaussians to perform both spectral and spatial smearing. The noise was added to the Stokes profiles as photon noise $F \times 1/\sqrt{I_c}$, where F is white noise with a Gaussian distribution and I_c is the continuum intensity. The chosen standard deviation of F was 10^{-3} , which corresponds to the

Table 1. Influence on the photospheric field for different cases.

Case studied	C_{B_x}	C_{B_y}	C_{B_z}	C_{vec}	$\langle J_z \rangle$	$\langle B_z \rangle$
Reference	1	1	1	1	0.059	103.5
Inversion of synthetic profiles (tests)						
Full resolution, no noise and full profiles						
6302.5 Å	0.89	0.88	0.97	0.96	0.065	96.7
6173.3 Å	0.89	0.88	0.97	0.96	0.065	95.9
Full resolution, with noise and full profiles						
6302.5 Å	0.87	0.86	0.97	0.95	0.086	97.6
6173.3 Å	0.88	0.88	0.97	0.95	0.070	96.5
Full resolution, with Filters (5 + 1λ) values						
6173.3 Å no noise	0.86	0.85	0.97	0.95	0.084	96.0
6173.3 Å w. noise	0.72	0.70	0.97	0.90	0.213	96.7
Hinode/SP						
no noise	0.80	0.77	0.84	0.82	0.047	79.4
10 ⁻³ noise	0.76	0.71	0.84	0.81	0.067	80.7
SO/PHI						
no noise	0.79	0.68	0.85	0.82	0.078	84.5
10 ⁻³ noise	0.67	0.53	0.85	0.73	0.184	85.2

typical noise level of modern spectro-polarimetric observations (e.g. Hinode/SP data). Noise is included in a similar way when noise is added to the data. More subtle instrumental effects, such as scattered light or a slight defocus (e.g., Danilovic et al. 2008), are not considered.

2.4. SO/PHI magnetograph

The Solar Orbiter Polarimetric and Helioseismic Imager (SO/PHI), a vector magnetograph, will be one of the main instruments on the ESA-NASA Solar Orbiter mission. Of the two mission telescopes, the High Resolution Telescope (HRT) is of primary importance to the present investigation (because of the small horizontal extent of the MHD simulations). The spectral line chosen for SO/PHI, Fe I 6173.3 Å, combines high Zeeman sensitivity with spectral purity, needed for simultaneous vector magnetic field and helioseismology studies. We describe the point spread function (PSF) by a Gaussian with $FWHM = 150$ km. The arrays of Stokes parameters obtained are rebinned to a spatial pixel size of 80 km. We then convolve the Stokes profiles in the spectral dimension with a Fabry-Pérot type filter of $FWHM = 100$ mÅ. Since SO/PHI will be a filtergraphic instrument, we decrease the number of spectral samples per line by taking 5 positions in the line and one in the continuum at the positions (from line center at rest): -0.3 Å, -0.15 Å, -0.075 Å, 0 Å, $+0.075$ Å, and $+0.15$ Å. At that stage, we add noise and perform the inversion of the Stokes profiles.

2.5. Extrapolation of the vector magnetogram into the atmosphere

To compute a 3D-nonlinear force-free magnetic field from the result of the HeLIx inversion code, we carry out the following steps:

- If needed, we transform B , θ , and ϕ , which are outputs of the inversion code to B_x , B_y , B_z in the photosphere, which requires a resolution of the 180° ambiguity in ϕ . (See Sect. 2.5.1.)
- We reprocess the vector magnetogram (B_x , B_y , B_z), assuming that it refers to the same geometric height at every spatial pixel. (See Sect. 2.6.1.)

- Compute a nonlinear force-free coronal magnetic field from the preprocessed vector magnetogram. (See Sect. 2.6.2.)
- Compare the result with the reference field.

We explain these steps in the following.

2.5.1. Removal of the 180° ambiguity

In the present investigation, we chose to remove the 180° ambiguity by minimizing the angle to the exact solution. This possibility does not, of course, exist for real data, and other methods of ambiguity inversion would need to be tried. The performance of different ambiguity removal techniques was studied using synthetic data by Metcalf et al. (2006). They found that the most reliable technique managed to recover 100% of the points correctly. The influence of noise and spatial resolution on the quality of the different ambiguity removal techniques was investigated by Leka et al. (2009). We did not consider specific ambiguity removal techniques. An investigation of their efficiency and influence is beyond the scope of this paper.

2.6. Effects on the photosphere

In Table 1 and Fig. 1 we investigate the effects of different instrument effects and noise on the vector field in the photosphere. The first line corresponds to the MHD reference field. The field has an average electric current density of $\langle |J_z| \rangle = 0.059$ A/m² and a vertical magnetic field strength of $\langle |B_z| \rangle = 103.5$ G. Positive and negative values of these quantities are balanced. In the table, we compute the correlation relative to this reference case for the horizontal fields C_{B_x} , C_{B_y} , the vertical field C_{B_z} and the 2D-vector correlation in the photosphere C_{vec} and provide the average absolute values $\langle |B_z| \rangle$ and $\langle |J_z| \rangle$. For all full spatial resolution cases (upper part of the table), the correlation is 0.97 for the vertical magnetic field strength, and the average field strength is underestimated by a few percent. Noise and instrument effects seem to have a relatively small effect on the vertical field. The effect of a lower resolution (lower part of the figure, Hinode/SP and SO/PHI cases) on the horizontal photospheric magnetic fields B_x , B_y , and the derived vertical current density J_z is significantly higher. For full profiles, the correlation in the horizontal fields is in the range of 0.85–0.88, but the combined effect of filter and noise reduces the correlation to only 0.70 and generates spurious, non-physical electric currents, which causes an overestimation of J_z by a factor of about 3.

2.6.1. Preprocessing

The magnetic field in the photosphere is not necessarily force-free (because of the finite β plasma in the photosphere, see Gary 2001) and the horizontal components (B_x and B_y) of current vector magnetographs have large uncertainties. Aly (1989) defined a number of integral relations to evaluate whether a measured photospheric vector magnetogram is consistent with the assumption of a force-free field. These integral relations (numerator in Eq. (1)) were used to define a dimensionless parameter ϵ_{force} to be

$$\frac{|\int_S B_x B_z dx dy| + |\int_S B_y B_z dx dy| + |\int_S (B_x^2 + B_y^2) - B_z^2 dx dy|}{\int_S (B_x^2 + B_y^2 + B_z^2) dx dy}, \quad (1)$$

where force-free extrapolation codes require $\epsilon_{\text{force}} \ll 1$ on the boundary. (One obtains $\epsilon_{\text{force}} = 0$ if the integral relations are fulfilled exactly)

For the synthetic magnetograms investigated in Table 1, we find $\epsilon_{\text{force}} = 0.57 \pm 0.19$ in the photosphere. Wiegmann et al. (2006b) developed a preprocessing procedure to drive the observed non force-free data towards boundary conditions suitable for a force-free extrapolation. As a result of the preprocessing, we obtain a boundary-data set that is consistent with the assumption of a force-free magnetic field. After applying the preprocessing routine we archive force-free consistent boundary conditions with $\epsilon_{\text{force}} = (2.6 \pm 0.2) \times 10^{-4}$. The preprocessing affects mainly the horizontal magnetic field components. The correlation of original and preprocessed field for the investigated cases is $C_{B_z} = 0.99 \pm 0.006$ for the vertical component B_z . For the horizontal components, we find a correlation of $C_{B_x} = 0.91 \pm 0.05$ and $C_{B_y} = 0.90 \pm 0.05$, respectively.

2.6.2. Extrapolation of nonlinear force-free fields

Force-free coronal magnetic fields must obey the equations

$$(\nabla \times \mathbf{B}) \times \mathbf{B} = 0, \quad (2)$$

$$\nabla \cdot \mathbf{B} = 0. \quad (3)$$

We define the functional

$$L = \int_V w \left[B^{-2} |(\nabla \times \mathbf{B}) \times \mathbf{B}|^2 + |\nabla \cdot \mathbf{B}|^2 \right] d^3x, \quad (4)$$

where w is a weighting function. It is obvious that (for $w > 0$) the force-free Eqs. (2), (3) are fulfilled when L is equal to zero (Wheatland et al. 2000). We minimize Eq. (4) numerically as explained in detail by Wiegmann (2004). The program is written in C and was parallelized with OpenMP. Wiegmann & Neukirch (2003) and Schrijver et al. (2006) tested the program for the conditions of exact nonlinear force-free equilibria developed by Low & Lou (1990), while Wiegmann et al. (2006a) tested it with another exact equilibrium developed by Titov & Démoulin (1999). The code was applied to vector magnetograph data from the German Vacuum Tower Telescope (VTT) by Wiegmann et al. (2005a,b) and to data from the Solar Flare Telescope (SFT) by Wiegmann et al. (2006b). Here we use an updated version of the optimization approach that includes a multi-scale approach described and tested by Metcalf et al. (2008) and applied to Hinode data by (Schrijver et al. 2008).

2.7. Figures of merit

Schrijver et al. (2006) introduced several figures of merit to compare the results of magnetic field extrapolation codes (a 3D-vector field \mathbf{b}) with a reference solution \mathbf{B} :

- Vector correlation:

$$C_{\text{vec}} = \sum_i \mathbf{B}_i \cdot \mathbf{b}_i / \left(\sum_i |\mathbf{B}_i|^2 \sum_i |\mathbf{b}_i|^2 \right)^{1/2}, \quad (5)$$

where i corresponds to all grid points in the entire 3D computational box.

- Total magnetic energy of the reconstructed field \mathbf{b} normalized by the energy of the reference field \mathbf{B} :

$$\epsilon = \frac{\sum_i |\mathbf{b}_i|^2}{\sum_i |\mathbf{B}_i|^2}. \quad (6)$$

- We also compute the linear Pearson correlation C of the total magnetic field strength $|\mathbf{B}|$ at the heights 100 km, 400 km and 800 km above the reference height, Z_{ref} , respectively. Two vector fields agree perfectly if C_{vec} , ϵ , and the Pearson correlation coefficients are all unity.

Table 2. Various figures of merit of the 3D reconstruction for different cases.

Case studied	C_{vec}	ϵ	$C_{100 \text{ km}}$	$C_{400 \text{ km}}$	$C_{800 \text{ km}}$
Reference	1	1	1	1	1
Potential	0.68	0.62	0.72	0.84	0.97
MHD cases with reduced resolution					
Pixel Size 40 km	0.99	0.93	0.99	1.00	1.00
Pixel Size 80 km	0.93	0.79	0.94	0.96	0.99
Inversion of synthetic profiles (tests)					
Full resolution, no noise and full profiles					
6302.5 Å	0.92	1.06	0.93	0.98	1.00
6173.3 Å	0.93	0.99	0.93	0.98	0.99
Full resolution, with noise and full profiles					
6302.5 Å	0.93	1.04	0.93	0.98	1.00
6173.3 Å	0.93	1.05	0.93	0.98	0.99
Full resolution, with Filters (5 + 1λ) values					
6173.3 Å no noise	0.92	1.06	0.92	0.98	0.99
6173.3 Å w. noise	0.91	1.10	0.89	0.97	0.99
Hinode/SP					
no noise	0.85	0.66	0.85	0.96	0.99
10 ⁻³ noise	0.84	0.62	0.84	0.95	0.99
SO/PHI					
no noise	0.84	0.75	0.85	0.96	0.99
10 ⁻³ noise	0.81	0.76	0.78	0.90	0.98

3. Results

Table 2 contains the different quantitative measurements that compare the different reconstructed field from synthetic observations with the reference field (extrapolations from ideal data). Column 2 contains the vector correlation C_{vec} , Col. 3 the normalized magnetic energy ϵ , and Cols. 4–6 the linear Pearson correlation C of the total magnetic field strength $|\mathbf{B}|$ at the heights 100 km, 400 km, and 800 km above the reference height, Z_{ref} , respectively.

Figures 2 and 3 show contourplots of the magnetic field strength $|\mathbf{B}|$ at 100 km and 400 km above Z_{ref} , respectively.

3.1. MHD cases

In the first 4 images of Figs. 2 and 3 we compare the nonlinear force-free 3D magnetic field reconstructed from ideal data (extracted from the MHD simulations at Z_{ref} , called Reference in Table 2 and in Figs. 2, 3) with a potential field extrapolation also starting from ideal data (Potential) and nonlinear force-free computations starting from magnetic field maps obtained from the inversion of synthetic Stokes profiles and MHD cases. Potential fields are often calculated in addition to NLFFF, because they contain the minimum energy for given vertical boundary conditions and the free energy of a NLFFF-field above that of a potential field has relevance to coronal eruptions.

As seen in Table 2 and Figs. 2 and 3, the computations with reduced spatial resolution of 40 km pixels are in almost perfect agreement, while 80 km pixels provide excellent agreement. The correlation with the reference field is tighter higher in the atmosphere, which is unsurprising since small-scale field structures at the lower boundary do not propagate very high and the larger scales are less affected by the binning to larger horizontal pixels. The magnetic energy is underestimated because small-scale fields and currents at low heights, which contribute significantly to the total magnetic energy, are not resolved here.

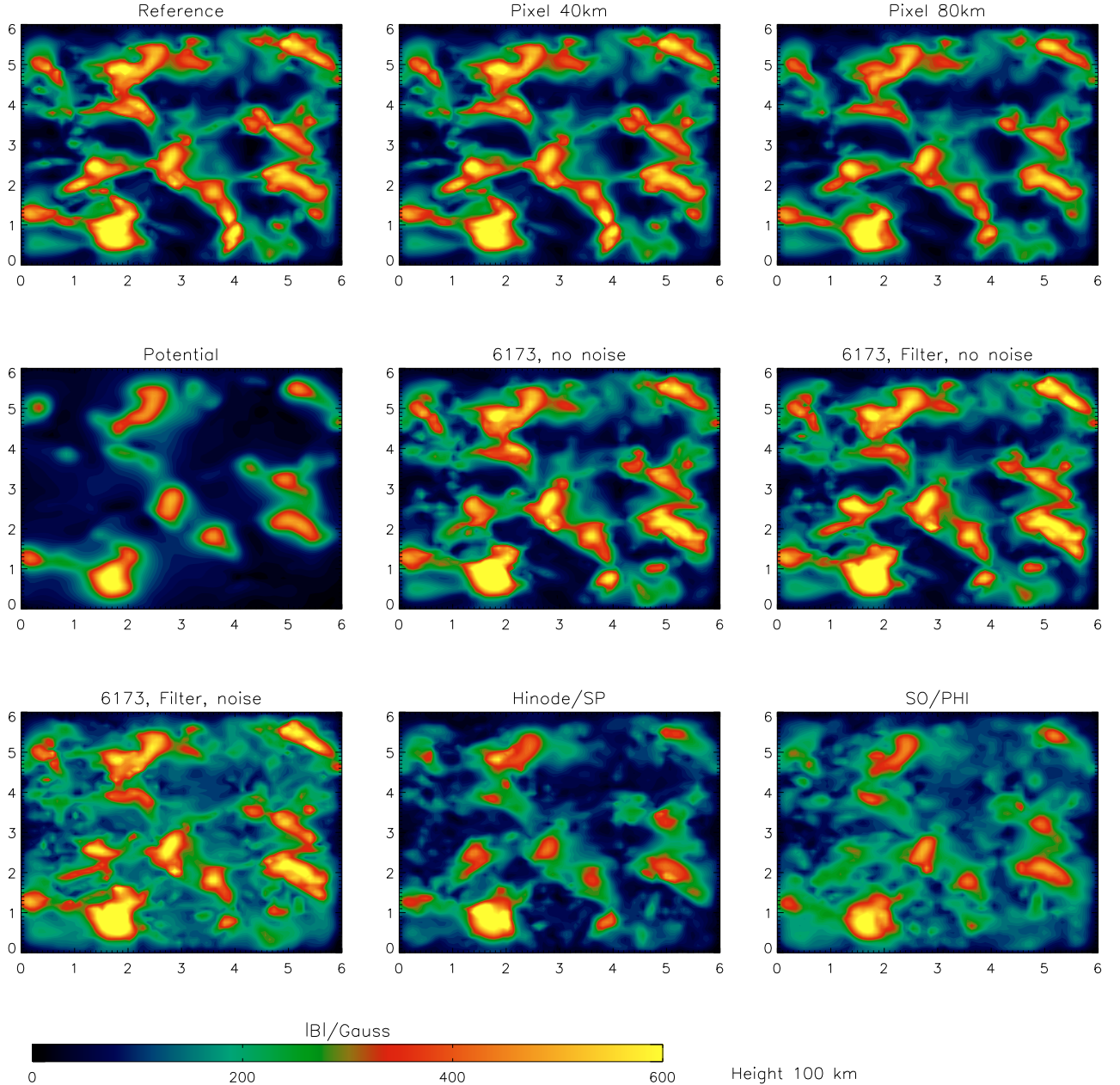


Fig. 2. $|B|$ for the reference field and fields extrapolated from inversion of synthetic profiles. The plots display $|B|$ at a height of 100 km above the reference height (see Sect. 2.1 for definition). The figure shows, *from top-left to bottom-right*, the ideal reference solution (indicated as Reference); extrapolations starting from the MHD output after reducing its spatial resolution (Pixel 40 km and Pixel 80 km, respectively); a potential field reconstruction (Potential); a reconstruction from a full resolution Spectro-Polarimeter in the 6173.3 Å line without noise achieved by inverting the full profiles (6173, no noise), reconstructions starting from inversions of full resolution filter magnetograms without and with noise (Filter, no noise and Filter, noise, respectively); and finally two cases with specifications adapted to those of two space-borne instruments, the Spectro-Polarimeter on Hinode (Hinode/SP) and the Polarimetric and Helioseismic Imager on Solar Orbiter (SO/PHI). The x and y axes are in Mm.

3.2. Dependence on the spectral line, noise, and spectral sampling

The remaining images in Figs. 2 and 3 and the remaining entries in Table 2 apply to extrapolations initiating from magnetic maps obtained from inversions of synthetic spectral lines. The first 3 of these images (marked 6173 no noise, Filter no noise, and Filter noise in Figs. 2 and 3) and the entire middle part of Table 2 are test cases for which we move step-by-step away from ideal (i.e., \mathbf{B} obtained directly from the MHD simulations) towards more realistic conditions, i.e., introducing various instrumental effects.

The first of these steps is to invert the synthetic line profiles directly, without any further manipulation (ideal Spectro-Polarimeter). This step introduces uncertainties caused by the inversion process per se (e.g., by complex Stokes profiles being fit when assuming purely symmetric or antisymmetric ones), that the line covers a range of heights, and the dependence of the line formation height on the type of solar feature.

The inversion of Stokes spectra expected from an ideal Spectro-Polarimeter leads to agreement with the reference field within a few percent for the vector correlation and we can estimate the magnetic energy with an accuracy of one percent

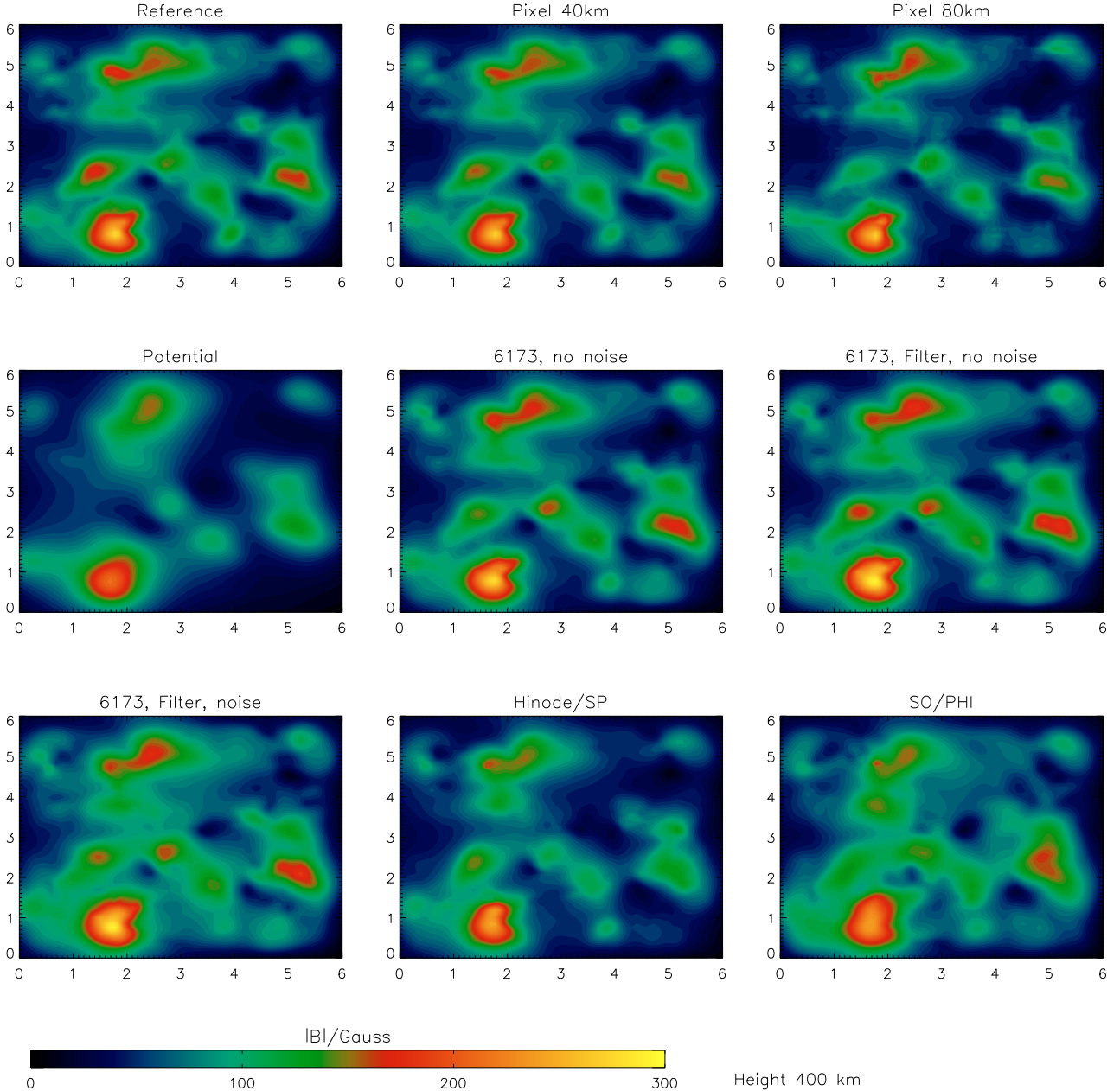


Fig. 3. Same as Fig. 2, but 400 km above the reference height.

for the 6173.3 Å line. The magnetic energy is an important quantity because it determines the amount of free energy maximally available for eruptive phenomena like flares and coronal mass ejections. The high accuracy achieved in this case is particularly encouraging because it shows that applying a simple Milne-Eddington inversion to the often highly asymmetric profiles (which sometimes exhibit multiple lobes in Stokes V) provides sufficiently accurate results and that the fluctuating height at which the magnetic field is obtained does not significantly influence the extrapolations (although we note that the situation may differ in a sunspot with its rather deep Wilson depression). This result implies that most of the inaccuracies in the extrapolations are caused by limitations to the instrumentation and not because it is in principle impossible to extract the magnetic field vector from the observations.

As Table 2 shows, there is little difference between the two $g = 2.5$ Zeeman triplets $\lambda 6302.5$ Å line and $\lambda 6173.3$ Å. The

field extrapolated from the magnetic field maps derived from either of them correlate very well with the reference field. Using the $\lambda 6173.3$ Å lines provides a slightly more accurate estimate of the magnetic energy, but all in all the need to use the Zeeman effect in a spectral line by itself only leads to errors of a few percent¹. The addition of noise at a level of 10^{-3} of the continuum intensity I_c , which is typical of modern Spectro-Polarimetric observations, has only a small effect. We note that by adding an equal amount of photon noise to all Stokes parameters we produce a much lower signal-to-noise ratio (S/N) in the linearly polarized Q and U profiles than in Stokes V because of the lower intensity of the former. The influence of noise of a given amplitude also depends heavily on the magnetic flux in the area from which we extrapolate. With $\langle B \rangle \approx 150$ G, the chosen

¹ The Z_{ref} was set to the average formation height for the $\lambda 6173.3$ Å line. This might explain the poorer results for the $\lambda 6302.5$ Å line.

snapshot corresponds to an average plage region. We expect that the same amount of noise will have a considerably stronger effect on weaker Stokes profiles present in the quiet sun.

It is important to consider whether measurements for limited wavelength bands and at reduced wavelength resolution, typical of filter polarimeters (filter magnetographs), are acceptable for extrapolations. One advantage of filter polarimeters is that they allow us to perform a time series of a whole region at high cadence. Of particular relevance to magnetic extrapolations is that filter polarimeters record the Stokes vector over the full field of view. This overcomes the main shortcoming of Spectro-Polarimeters, namely that they need to scan a region step by step, so that by the time the second footpoint of a loop is scanned the first may have evolved considerably. These advantages of filter instruments come at the price of a reduced spectral resolution and limited spectral sampling. An extensive series of tests by one of us (L. Yelles) using various MHD simulation snapshots has shown that observations at 5 wavelength points in the line plus one at the continuum should be adequate to obtain the magnetic field vector reliably.

The computations carried out here suggest that this is also true for the magnetic field extrapolated from vector magnetograms obtained from filter instruments. According to Table 2 and Figs. 2 and 3, the application of 100 mÅ broad filters to 5 locations in the Fe I 6173.3 Å line and additionally to a nearby continuum position gives an extrapolated nonlinear force-free field that differs only slightly from the results obtained with the full line profile. The magnetic energy is overestimated by at most 6% for a filter width <100 mÅ and at least 5 sampling points in the line and one in the nearby continuum.

Noise has a greater effect on filter polarimeter measurements than on spectropolarimetric ones, as can be judged from Table 2. In particular, the magnetic energy is affected, since it is a factor of two less accurate than from spectropolarimetric measurements. If we take the effect of photometric noise of $10^{-3}I_c$ in all Stokes parameters into account, we overestimate the magnetic energy by 10%. The higher magnetic energy in these cases is probably the result of stronger currents in the photosphere, which are inferred from a less accurate computation of the horizontal photospheric field during the inversion. The total vertical magnetic field $\int |B_z| dx dy$ in the photosphere is underestimated by 7% after inversion of a set of filter images (irrespective of whether noise is applied or not). The total vertical current $\int \left| \frac{\partial B_y}{\partial x} - \frac{\partial B_x}{\partial y} \right| dx dy$ is overestimated by 42% and 262% without and with noise, respectively. Most of these spurious currents produced by spectral line inversions fluctuate on very small scales so that they either truly are or behave like noise. Consequently, they are not transported into the corona. The preprocessing routine takes care of this problem and most of the spurious currents vanish. After preprocessing, the total current is overestimated by 2% and 9% for inversions without and with noise, respectively.

3.3. Hinode-like cases

As discussed in this and the following subsection, we now make the synthetic observations more realistic by employing parameters that are appropriate to high resolution instruments. In this section we consider the important case of the spectropolarimeter on Hinode (see also Sect. 2.3).

After taking the finite spatial resolution (pixel size 110 km) and spectral smearing into account, we naturally obtain less accurate results (rows marked Hinode/SP in Table 2). We find

that we cannot reconstruct the magnetic energy accurately in these cases, because small-scale magnetic fields are not adequately resolved. We obtain, however, a reasonable estimate of the correct magnetic field in higher layers of the atmosphere. For the most involved case (Hinode-like Spectro-Polarimeter with a noise of $10^{-3}I_c$ and a pixel size of 110 km), we find an error of 16%, 5%, and 1% at the heights 100, 400, and 800 km above Z_{ref} , respectively. The limited resolution avoids accurate reconstructions of low-lying small-scale features, but recovers the field at greater heights approximately correctly. At heights above 400 km, even the most involved and noisy nonlinear force-free reconstruction considered here has an accuracy that is a factor of three times superior to that with a potential field reconstruction starting from a perfectly known lower boundary.

3.4. SO/PHI-like cases

We also consider instrumental effects appropriate to the PHI instrument on Solar Orbiter such as the finite spectral resolution and sampling by a Fabry-Perot interferometer, finite spatial resolution of approximately 160 km (pixel size 80 km) on the sun, and photon noise at a level of $10^{-3} \times \frac{1}{\sqrt{I_c}}$. Details are given in Sect. 2.4. The extrapolated magnetic field displays a very similar spatial distribution as that based on the inversion of ideal line profiles. On the whole, the influence of degrading the spatial resolution to a pixel size of 80 km (denoted as Filter+Noise in Figs. 2, 3) introduces a similar level of inaccuracy in the extrapolated field as the uncertainties in B_x , B_y , and B_z at the lower boundary introduced by instrumental effects and the inversion of the line profiles. However, even for these most involved cases, of comparatively low resolution, instrument effects and noise, the agreement with the reference is closer than a potential field computed from ideal data at the lower boundary. The stronger correlation of ϵ with the reference value than for Hinode is probably due to the somewhat higher spatial resolution expected for PHI. This suggests that for accurate estimates of the magnetic energy it is more important to achieve high spatial resolution than completely accurate line profiles. The field at 100 km above Z_{ref} and partly at 400 km is reproduced more accurately for Hinode/SP-like parameters than for the SO/PHI case. Obviously, studies of low lying fields would benefit from having the full line profile (in particular when noise is included).

4. Conclusions

We have investigated how strongly inaccuracies in the lower magnetic boundary, introduced by measurement and analysis errors in the Stokes profiles influence the computation of nonlinear force-free coronal magnetic fields.

We have found that instrument effects and noise influence the horizontal component of the photospheric magnetic field vector more strongly than the vertical field. We have found that nonlinear force-free fields extrapolated from both ideal data and the inversion of Stokes profiles deviate significantly more at lower heights. In particular, a limited spatial resolution influences the lowest layers the most. Higher in the atmosphere, we found good agreement (correlation stronger than 0.98) with extrapolations from ideal data. We have found that for an accurate estimation of the magnetic energy, a high spatial resolution is more important than a high spectral resolution.

These basic findings apply to magnetic vector maps obtained from both, spectropolarimetric data, such as those provided by

