



TUM Impact Laboratory

Martin Rott, Eduard Igenbergs

Lehrstuhl für Raumfahrttechnik
TU München

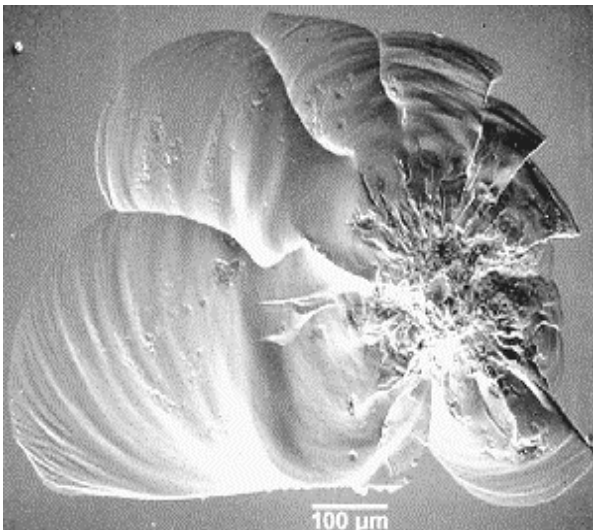
1. Overview
2. CASSINI Related Equipment
3. Low Speed Accelerators

> Particle Acceleration in the Laboratory

Micrometeoroids
Space Debris



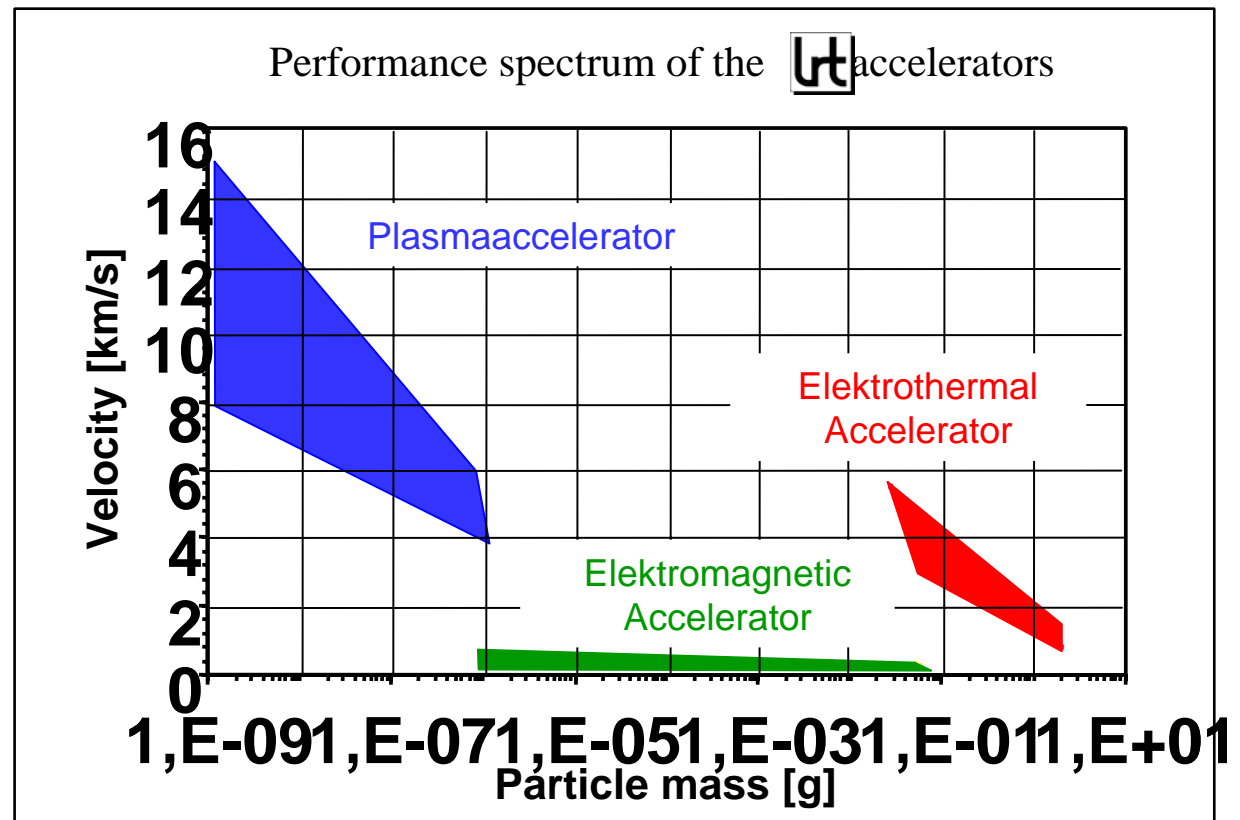
Very high velocities



Impact of a microparticle;
Shuttle Window

Why impacts in the laboratory?

- Impact danger for satellites
- Development of dust detectors
- Basic research on impact features
- Determination of characteristic material data



> Laboratory at TUM in Garching



CASSINI Test Chamber
designed to accommodate the
engineering model of CDA

