

Helioseismology of Sunspots: A Case Study of NOAA Region 9787

L. Gizon · H. Schunker · C.S. Baldner · S. Basu · A.C. Birch · R.S. Bogart ·
D.C. Braun · R. Cameron · T.L. Duvall Jr. · S.M. Hanasoge · J. Jackiewicz · M. Roth ·
T. Stahn · M.J. Thompson · S. Zharkov

Received: 4 August 2008 / Accepted: 7 November 2008
© The Author(s) 2008. This article is published with open access at Springerlink.com

Abstract Various methods of helioseismology are used to study the subsurface properties of the sunspot in NOAA Active Region 9787. This sunspot was chosen because it is axisymmetric, shows little evolution during 20–28 January 2002, and was observed continuously by the MDI/SOHO instrument. AR 9787 is visible on helioseismic maps of the farside of the Sun from 15 January, i.e. days before it crossed the East limb.

Oscillations have reduced amplitudes in the sunspot at all frequencies, whereas a region of enhanced acoustic power above 5.5 mHz (above the quiet-Sun acoustic cutoff) is seen outside the sunspot and the plage region. This enhanced acoustic power has been suggested to be caused by the conversion of acoustic waves into magneto-acoustic waves that are refracted back into the interior and re-emerge as acoustic waves in the quiet Sun. Observations show that the sunspot absorbs a significant fraction of the incoming p and f modes around 3 mHz. A numerical simulation of MHD wave propagation through a simple model of AR 9787 confirmed that wave absorption is likely to be due to the partial conversion of incoming waves into magneto-acoustic waves that propagate down the sunspot.

L. Gizon (✉) · H. Schunker · R. Cameron · J. Jackiewicz · M. Roth · T. Stahn
Max-Planck-Institut für Sonnensystemforschung, 37191 Katlenburg-Lindau, Germany
e-mail: gizon@mps.mpg.de

C.S. Baldner · S. Basu
Department of Astronomy, Yale University, PO Box 208101, New Haven, CT 06520, USA

A.C. Birch · D.C. Braun
Colorado Research Associates, A Division of NorthWest Research Associates, Inc., 3380 Mitchell Lane, Boulder, CO 80301-5410, USA

R.S. Bogart · S.M. Hanasoge
Hansen Experimental Physics Laboratory, Stanford University, Stanford, CA 94305, USA

T.L. Duvall Jr.
Laboratory for Solar Physics, NASA/Goddard Space Flight Center, Greenbelt, MD 20771, USA

M.J. Thompson · S. Zharkov
School of Mathematics and Statistics, University of Sheffield, Houndsfield Road, Sheffield, S3 7RH, UK

Wave travel times and mode frequencies are affected by the sunspot. In most cases, wave packets that propagate through the sunspot have reduced travel times. At short travel distances, however, the sign of the travel-time shifts appears to depend sensitively on how the data are processed and, in particular, on filtering in frequency-wavenumber space. We carry out two linear inversions for wave speed: one using travel-times and phase-speed filters and the other one using mode frequencies from ring analysis. These two inversions give subsurface wave-speed profiles with opposite signs and different amplitudes.

The travel-time measurements also imply different subsurface flow patterns in the surface layer depending on the filtering procedure that is used. Current sensitivity kernels are unable to reconcile these measurements, perhaps because they rely on imperfect models of the power spectrum of solar oscillations. We present a linear inversion for flows of ridge-filtered travel times. This inversion shows a horizontal outflow in the upper 4 Mm that is consistent with the moat flow deduced from the surface motion of moving magnetic features.

From this study of AR 9787, we conclude that we are currently unable to provide a unified description of the subsurface structure and dynamics of the sunspot.

Keywords Sun · Sunspots · Helioseismology

1 Introduction

One of the main goals of solar physics is to understand the physical processes responsible for solar magnetism and activity. This requires the study of magnetic flux tubes, their transport and dynamics in the convection zone, and their emergence at the solar surface in the form of sunspots and active regions. The overall nature of sunspots is still a matter of debate. Many open questions remain concerning their structure and, above all, their formation and stability. How can regions of such intense magnetic flux come into existence and remain stable over several days, weeks, and sometimes months? Another common question is whether sunspots are monolithic magnetic flux tubes or have a spaghetti-like structure (Parker 1979). Schüssler and Rempel (2005) proposed a scenario whereby a sunspot expands rapidly below the surface during the early stages of its formation, leading to a disconnection from its magnetic roots. This disconnection may allow a transition to a spaghetti-like subsurface structure. As to the stability of sunspots, it may be due to the presence of surface and subsurface collar flows (Parker 1979). Other questions concern the energetics of sunspots, the flow of heat through and around sunspots, and the nature of magnetoconvection at kilogauss fields. What is known about sunspots has been summarized by, e.g., Thomas and Weiss (1992) and Solanki (2003). For a description of various magnetostatic sunspot models, we refer the reader to Jahn (1992) and Rempel et al. (2008).

In this paper we will discuss the potential of helioseismology to probe the subsurface structure of sunspots, with the hope of answering, one day, some of the questions listed above. Local helioseismology includes several methods of analysis, which have been described in some detail by Gizon and Birch (2005). All these methods rely on continuous time series of Doppler images of the Sun's surface. Fourier-Hankel analysis was developed to study the relationship between ingoing and outgoing waves around a sunspot (Braun et al. 1987; Braun 1995). Ring-diagram analysis consists of analysing the frequencies of solar acoustic waves over small patches of the solar surface (Hill 1988; Antia and Basu 2007). Time–distance helioseismology (TD) measures the travel times of wave packets moving through the solar interior (Duvall Jr. et al. 1993). Helioseismic holography (HH) uses the observed wave field at the solar surface to infer the wave field at different depths (Lindsey and Braun 1997). A summary of recent results is provided by Gizon (2006) and Thompson and Zharkov (2008).

There have been several studies of sunspots using helioseismology. Braun et al. (1987, 1992a) and Braun (1995) used Fourier-Hankel decomposition to measure wave absorption and scattering phase shifts caused by sunspots. The absorption is believed to be the result of a partial conversion of incoming p modes into slow magnetoacoustic waves (e.g., Spruit and Bogdan 1992; Cally 2000). Observational signatures of the mode conversion process have been discussed, for example, by Schunker and Cally (2006). Agreement between the observations of Braun (1995) and simplified sunspot models were reported by Fan et al. (1995), Cally et al. (2003), and Crouch et al. (2005) using a forward modeling approach. Time–distance helioseismology and helioseismic holography aim at making images of the solar interior from maps of travel times or phase shifts under the traditional assumption that the Sun is weakly inhomogeneous in the horizontal directions. TD and HH have been used to infer wave speed variations and flows in and around sunspots (e.g., Duvall Jr. et al. 1996; Jensen et al. 2001; Braun and Lindsey 2000; Gizon et al. 2000; Kosovichev et al. 2000; Zhao et al. 2001; Couvidat et al. 2006). Ring-diagram analysis has a coarser horizontal resolution and is used to study the subsurface structure of entire active regions (e.g., Basu et al. 2004; Antia and Basu 2007; Bogart et al. 2008). While these methods and their variants appear to be quite robust, it has not been demonstrated that they are consistent. For instance ring-diagram analysis has not been directly compared to time–distance or holography in the case of an isolated sunspot. This paper reports on a joint study of the sunspot in NOAA Active Region 9787.

2 Observations of NOAA Region 9787

2.1 MDI/SOHO Observations

NOAA Active Region 9787 was chosen from the MDI/SOHO data library because it hosts a large, round, isolated sunspot. A quick look at the data is given by Fig. 1. The data consist of nine days of MDI full disk Dopplergrams for each minute from 20 January to 28 January 2002. MDI also recorded the line-of-sight magnetic field every minute and intensity images every six hours. The images were remapped using Postel projection with a map scale of 0.12° . The centers of projection were chosen to track the motion of the sunspot (Carrington longitude $\phi \sim 133^\circ$ and latitude $\lambda = -8.3^\circ$). The re-mapping routine employs a cubic convolution interpolation. Missing data was linearly interpolated in time and a daily temporal mean was subtracted from each Dopplergram. Finally, we are left with one $512 \times 512 \times 1440$ data cube of Doppler velocity data for each day. These data sets are made available on the European Helio- and Asteroseismology Network (HELAS) web site at <http://www.mps.mpg.de/projects/seismo/NA4/>. All authors were invited to analyse the same data, thereby eliminating discrepancies in the data reduction methods.

Figure 1 shows a daily average of the MDI intensity continuum, magnetic field and Doppler velocity showing that there is little evolution of the sunspot during the period covered by the observations. The Dopplergrams show a ~ 2 km/s Evershed outflow in the penumbra of the sunspot. The sunspot exhibits some amount of proper motion. Figure 2 shows the intensity profile of the sunspot averaged over nine days and over azimuthal angle, after correcting for the proper motion of the sunspot. The umbral and penumbral boundaries are at radii 9 Mm and 20 Mm respectively.

The sunspot is surrounded by a region of horizontal outflow called the moat flow. In order to characterise the strength and extent of the moat, we measured the motion of the moving magnetic features (MMFs) from hourly averages of the magnetograms using a local

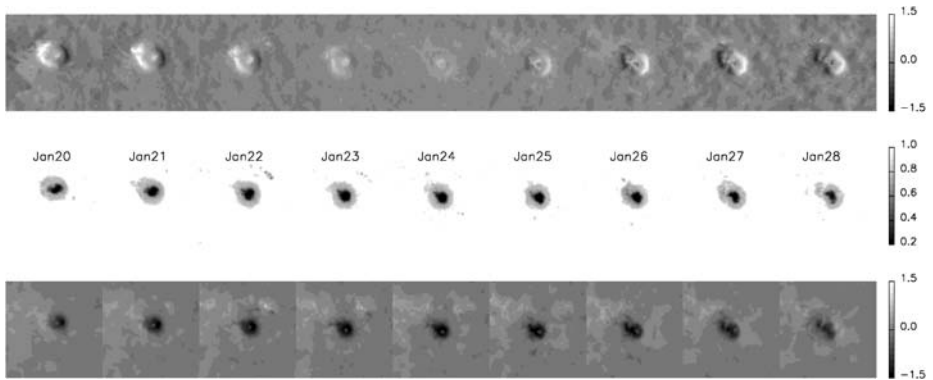


Fig. 1 Daily averages of the SOHO/MDI Doppler velocity (*top*), intensity (*middle*), and line-of-sight magnetic field (*bottom*) of the sunspot in Active Region 9787 during January 20–28, 2002. The Doppler velocity is in units of km/s, the magnetic field in units of kG. Each daily frame is a square with sides of length 200 Mm

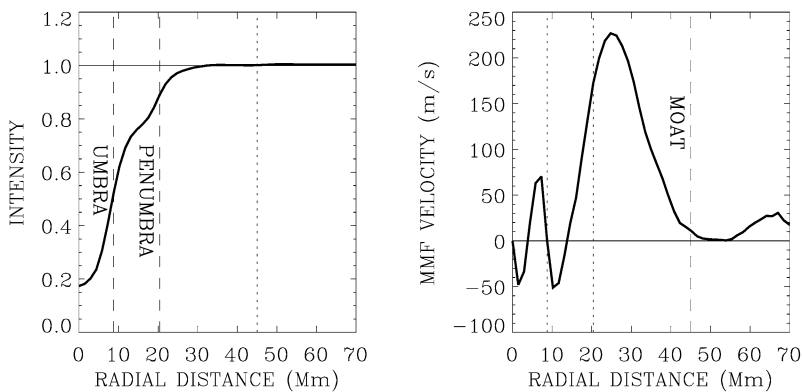


Fig. 2 (*Left*) Normalised intensity profile of the sunspot averaged over time and azimuth. The *vertical dashed lines* indicate the umbral and penumbral boundaries. The boundary of the moat is given by the *dotted line*. (*Right*) Velocity of moving magnetic features (MMFs) averaged over time and azimuth as a function of distance from the center of the sunspot. The MMFs track the moat flow and are moving outward from the outer penumbra up to a radius of about 45 Mm (*dashed line*). The *dotted vertical lines* indicate the boundaries of the umbra and the penumbra

correlation tracking method. The temporal and azimuthal averages of the MMF velocity is plotted in Fig. 2 as a function of distance from the center of the sunspot. The moat flow has a peak amplitude of 230 m/s and extends to about 45 Mm. The moat radius is about twice the penumbral radius, which is a standard value (Brickhouse and Labonte 1988).

The early development of Active Region 9787 can be traced using the helioseismic technique of farside imaging (Braun and Lindsey 2000; Lindsey and Braun 2000). Figure 3 shows four maps of the full Sun created by K. Oslund and P.H. Scherrer (2006). These maps were taken from the SOI website at http://soi.stanford.edu/data/full_farside/. The overlaid grid represents Carrington solar coordinates where vertical lines of longitude are separated by 60° . Active Region 9787 is located close to latitude $\lambda = -8.3^\circ$ and longitude $\phi = 133^\circ$, as shown by the red circles in Fig. 3. The active region is detected on the farside of the Sun in the top two panels of Fig. 3. We then see the active region ro-

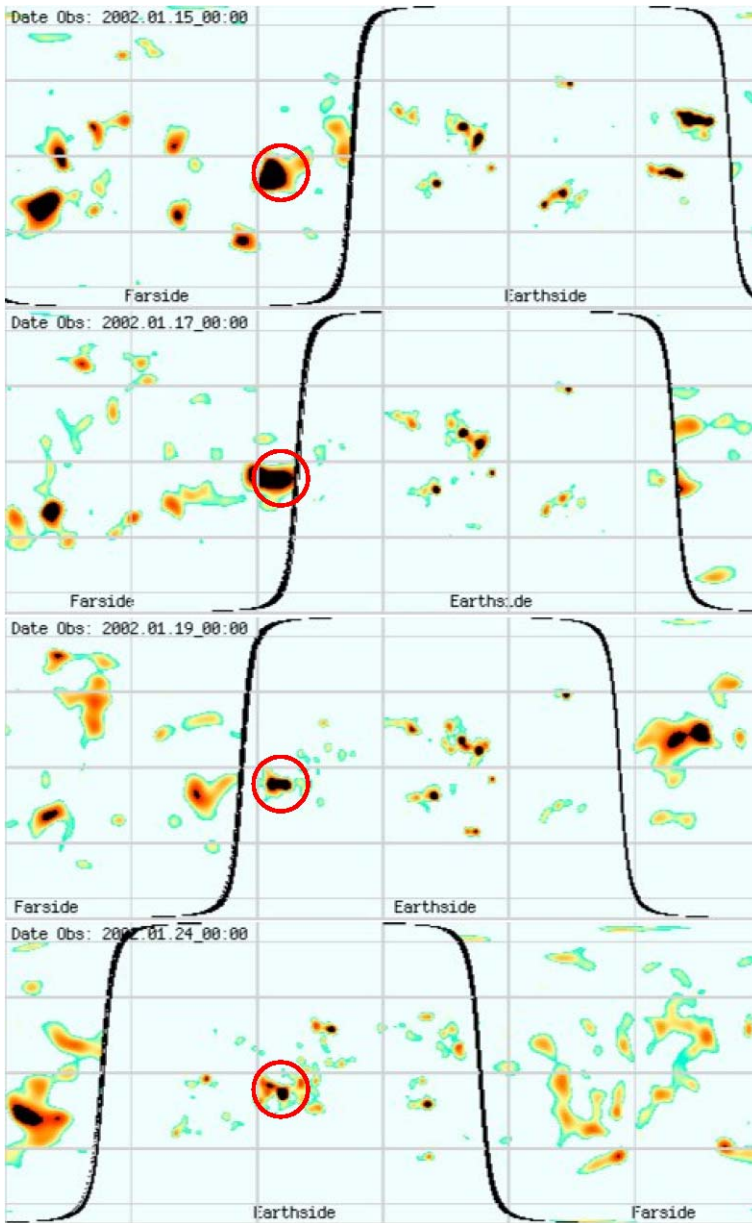


Fig. 3 Maps of the full Sun created using helioseismic waves to infer the presence of magnetic activity on the farside of the Sun. Strong shifts (*black/orange*) in the phase indicate an active region, the *light blue* represents the quiet Sun. The *horizontal lines* are lines of constant latitude, the *vertical lines* are lines of constant Carrington longitude separated by 60° . The dates from top to bottom are 2002 January 15, 17, 19, and 24. Active Region 9787 is located close to latitude $\lambda = -8.3^\circ$ and longitude $\phi = 133^\circ$ in all four maps, indicated by the *red circles*. (Courtesy of K. Oslund and P.H. Scherrer (2006))

tate past the East limb to the Earth side (third panel) and then within our observation period (24th January 2002) in the bottom panel. Additional information is available online at <http://news-service.stanford.edu/pr/2006/pr-sun-031506.html>.

2.2 Oscillatory Power and Acoustic Halos

There are two main properties of the acoustic power in and around active regions that are well documented. One is the power reduction in strong magnetic field regions, particularly sunspots, and the second is the enhancement of power in the higher frequencies (5–6 mHz) in the nearby photosphere, known as the acoustic halo (Braun et al. 1992b; Donea et al. 2000). Here we quantify these properties for AR 9787.

We calculate the temporal Fourier transform of the Doppler images for each day of observation. We divide this into 0.5 mHz bandwidths and calculate the power averaged over each of these frequency bandwidths. For all frequency bands the acoustic power suppression is greater than 80% in the umbra compared to the quiet Sun. We observe enhanced acoustic power at higher frequencies (5–6 mHz) in regions outside the sunspot and strong plage (Fig. 4).

Previous analysis of MDI acoustic power maps by Ladenkov et al. (2002) showed a modest excess of power around a sunspot in the higher frequencies, but which also appeared to be directly related to the location of plage, rather than the sunspot itself. Hindman and Brown (1998) also find that the high frequency velocity signal in an active region is higher (up to 60%) in pixels with moderate magnetic field strengths between 50 to 250 G. The fact that AR 9787 has an extended plage region offers an opportunity to analyse the plage far from the associated sunspot. In essence, this study bolsters the previous analysis of Hindman and Brown (1998) and Ladenkov et al. (2002).

When the sunspot is located close to the limb we find a significant enhancement of power in the umbra at high frequencies, to a level almost as high as in the quiet Sun. If this power is real and not an artifact of observing conditions at the limbs, then it could be due to magnetoacoustic waves with a component of motion perpendicular to the field lines in the umbra.

From Fig. 4, a region of particularly strong power close to the south-east side of the sunspot can be seen. This enhanced power is associated with the strong plage region just to

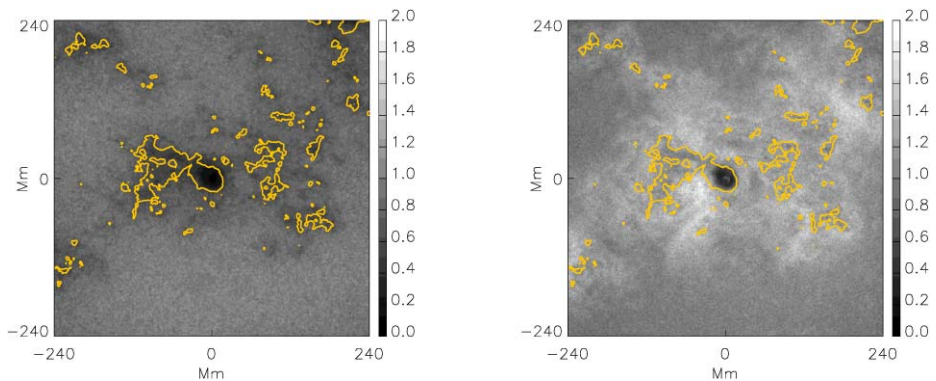


Fig. 4 Acoustic power averaged over all days and frequency bands 3–3.5 mHz (*left*) and 5.5–6 mHz (*right*). Overplotted contour is for $B = 100$ G, outlining regions of plage. The excess power outside the plage regions is clearly seen in the high-frequency maps (*right*). The power is normalised to unity in the quiet Sun (*grey scale*)

the North. Braun (1995) finds evidence of an acoustic deficit immediately outside a small (8 Mm) sunspot, extending out to 35 Mm and appearing to be well defined by the location of surrounding plage. The sunspot in AR 9787 shows little evidence for a well defined, axisymmetric acoustic halo, leading to the suggestion that the enhanced acoustic power is associated with the strong surrounding plage regions, rather than the sunspot itself.

The results of recent numerical work by Hanasoge (2008) seem to reproduce the high frequency halo surrounding a small model sunspot. The halo appears between 5 and 6 mHz, close to the acoustic cut-off. In agreement with the suggestion of Donea et al. (2000), the upwardly propagating fast mode waves may be reflected in magnetic regions due to the rapidly increasing Alfvén velocity. These waves later re-emerge in the region surrounding the sunspot causing the observed enhanced power.

2.3 Wave Absorption

A useful analysis procedure for studying the interaction of p modes with sunspots is the decomposition of solar oscillations, observed in an annular region around the sunspot, into inward and outward propagating waves. Fourier-Hankel spectral decomposition has been used to identify p -mode absorption in sunspots and active regions by comparing the amplitudes of the outward and inward moving waves (Braun et al. 1988; Bogdan et al. 1993; Braun 1995).

Here we use a sunspot-centered spherical-polar coordinate system (θ, ϕ) with the sunspot axis at $\theta = 0$. The annular region is defined by the inner and outer circles at $\theta_{\min} = 2.5^\circ$ and $\theta_{\max} = 11.25^\circ$, which correspond to distances between 30 and 137 Mm. The Doppler signal $\psi(\theta, \phi, t)$ in the annular region is decomposed into components of the form

$$e^{i(m\phi + 2\pi\nu t)} [A_m(l, \nu)H_m^{(1)}(l\theta) + B_m(l, \nu)H_m^{(2)}(l\theta)], \quad (1)$$

where m is the azimuthal order, l is the harmonic degree, $H_m^{(1)}$ and $H_m^{(2)}$ are Hankel functions of the first and second kinds, t is time, ν is temporal frequency, and A_m and B_m are the complex amplitudes of the incoming and outgoing waves respectively. The range in l is between 70 and 1500. The boundaries of the annulus, θ_{\min} and θ_{\max} , were selected such as to resolve the low-order p mode ridges with a resolution in l of approximately 40. The numerical procedure needed to compute the wave amplitudes $A_m(l, \nu)$ and $B_m(l, \nu)$ is described by Braun et al. (1988).

For each value of l we measure the mode amplitudes for the azimuthal order $m = 0$. The power spectra of the incoming and outgoing modes are displayed in Fig. 5. The outgoing p -mode power appears to be significantly reduced compared to the incoming p -mode power.

To measure this more quantitatively we determine an absorption coefficient for the f and p_n ridges in a frequency band between 2.9 and 3.1 mHz. The absorption coefficient is defined as

$$\alpha_n = \frac{\int dl d\nu W_n(P_{\text{in}} - P_{\text{out}})}{\int dl d\nu W_n P_{\text{in}}}, \quad (2)$$

where W_n is a window function that selects the n -th ridge, and $P_{\text{in}}(l, \nu)$ and $P_{\text{out}}(l, \nu)$ are the power of the ingoing and outgoing waves. In this frequency band 2.9–3.1 mHz, the f , p_1 , p_2 , p_3 , and p_4 ridges show absorption coefficients of 57%, 54%, 51%, 49%, and 50% respectively. These values are in agreement with those given in earlier studies (Braun et al. 1988; Braun 1995) and confirm that AR 9787 “absorbs” acoustic waves.

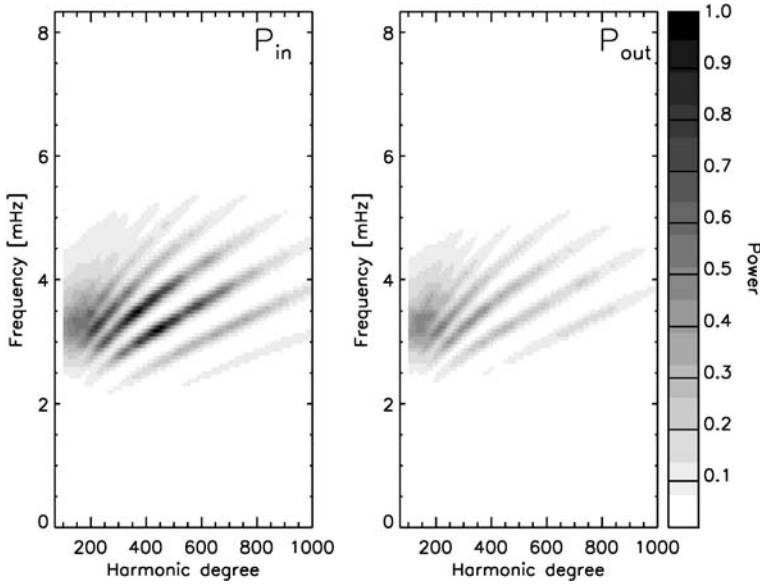


Fig. 5 Power spectra of inward (*left*) and outward (*right*) propagating waves as a function of harmonic degree and frequency. The reduction in power of the outgoing modes is noticeable

3 Travel Time Measurements

3.1 Phase-Speed Filtering versus Ridge Filtering

The principle of Helioseismic holography (HH) is to computationally regress the acoustic amplitudes observed at the surface into the solar interior (Lindsey and Braun 1997). To facilitate comparisons with results from time–distance analyses, we use *surface-focused* HH. In the “space–frequency” domain, i.e. where $\psi(\mathbf{r}, \nu)$ denotes the temporal Fourier transform of the observed Doppler velocities, the regressions in surface-focused HH are computed from

$$H_{\pm}^P(\mathbf{r}, \nu) = \int_P d^2\mathbf{r}' G_{\pm}(\mathbf{r}, \mathbf{r}', \nu) \psi(\mathbf{r}', \nu). \tag{3}$$

H_+ and H_- are the egression and ingression which represent estimates of the amplitudes propagating into and out of the focal point at position \mathbf{r} on the surface and ν is the temporal frequency. G_+ and G_- are Green’s functions that express how a monochromatic point disturbance at a position \mathbf{r}' on the surface propagates backward and forward in time, into the solar interior and back up to the focus. They are computed using the eikonal approximation (Lindsey and Braun 1997). The correlations,

$$C_+^P(\mathbf{r}) = \langle H_+^P(\mathbf{r}, \nu) \psi^*(\mathbf{r}, \nu) \rangle_{\Delta\nu}, \tag{4}$$

and

$$C_-^P(\mathbf{r}) = \langle \psi(\mathbf{r}, \nu) H_-^{P*}(\mathbf{r}, \nu) \rangle_{\Delta\nu}, \tag{5}$$

describe the egression and ingression control correlations respectively, which are directly comparable to center–annulus correlations used in time–distance (TD) helioseismology (e.g.,

Duvall Jr. et al. 1996; Braun 1997). The asterisk denotes complex conjugation, and the brackets indicate an average over a chosen positive frequency range $\Delta\nu$.

Surface-focused HH can be used to study flows by dividing the pupil P , over which the ingressions and egressions are computed, into four quadrants (labeled N , S , E , and W), each spanning 90° and oriented in the North, South, East and West directions respectively. We then compute the eight control correlations, $C_{\pm}^{N,S,E,W}$. Various combinations of these correlations are used to derive travel-time shifts due to the presence of flows or wave speed perturbations. In general, we compute travel-time shifts from various sums or differences of correlations such that, if C denotes some linear combination of correlations, the travel-time shift is

$$\delta\tau(\mathbf{r}) = \arg[C(\mathbf{r})]/2\pi\nu_0, \quad (6)$$

where ν_0 is the central frequency of the bandpass $\Delta\nu$. These represent travel-time shifts of the observed combination of waves relative to the travel times expected for the same ensemble of waves propagating in the solar model used to compute the Green's functions.

We present measurements of the mean travel-time shift ($\delta\tau_{\text{mean}}$), which represents the shift computed from the sum of all eight correlations:

$$\begin{aligned} \delta\tau_{\text{mean}}(\mathbf{r}) = \arg[& C_+^E(\mathbf{r}) + C_-^E(\mathbf{r}) + C_+^W(\mathbf{r}) + C_-^W(\mathbf{r}) \\ & + C_+^N(\mathbf{r}) + C_-^N(\mathbf{r}) + C_+^S(\mathbf{r}) + C_-^S(\mathbf{r})]/2\pi\nu_0. \end{aligned} \quad (7)$$

We also present travel-time shifts sensitive to horizontal flows. For example, we define a ‘‘EW’’ travel-time asymmetry

$$\delta\tau_{\text{EW}}(\mathbf{r}, \nu) = (\arg[C_-^E(\mathbf{r}, \nu) + C_+^W(\mathbf{r}, \nu)] - \arg[C_+^E(\mathbf{r}, \nu) + C_-^W(\mathbf{r}, \nu)])/2\pi\nu_0. \quad (8)$$

A similar travel-time shift can be measured for a North–South asymmetry. The sign of the travel-time perturbations is such that a perturbation in the background wave speed resulting in a faster propagation time will lead to a negative value of the mean travel-time shift ($\delta\tau_{\text{mean}}$) and a horizontal flow directed from East to West produces a negative value of the EW travel-time asymmetry ($\delta\tau_{\text{EW}}$).

Starting with the tracked, Postel-projected datacube described earlier (Sect. 2.1) we perform the following steps: 1) a temporal detrending by subtraction of a linear fit to each pixel signal in time, 2) removal of poor quality pixels, identified by a five-sigma deviation of any pixel from the linear trend, 3) Fourier transform of the data in time, 4) a correction for the amplitude suppression in magnetic regions (Rajaguru et al. 2006), 5) spatial Fourier transform of the data and multiplication by a chosen filter, 6) extraction of the desired frequency bandpass, 7) computation of Green's functions over the appropriate pupils, 8) computation of ingestion and egression amplitudes by a 3D convolution of the data with the Green's functions, and 9) computation of the travel-time shift maps by (4)–(8).

In step 5 we have used two general kinds of filters: phase-speed filters and ridge filters. While not as commonly used as phase-speed filters, ridge filters have been used previously for f -mode studies (e.g., Duvall Jr. and Gizon 2000; Gizon and Birch 2002; Jackiewicz et al. 2007; Jackiewicz et al. 2007) and recently for p modes (Jackiewicz et al. 2008; Braun and Birch 2008). The phase-speed filters used here are the same set of 11 filters (hereafter denoted ‘‘TD1–TD11’’) listed by Gizon and Birch (2005) and Couvidat et al. (2006) and commonly used in time–distance analyses. The inner and outer radii of the corresponding pupil quadrants are chosen so that acoustic rays at a frequency of $\nu = 3.5$ mHz propagating from the focus to the edges of the pupil have phase speeds (denoted by w) which span the

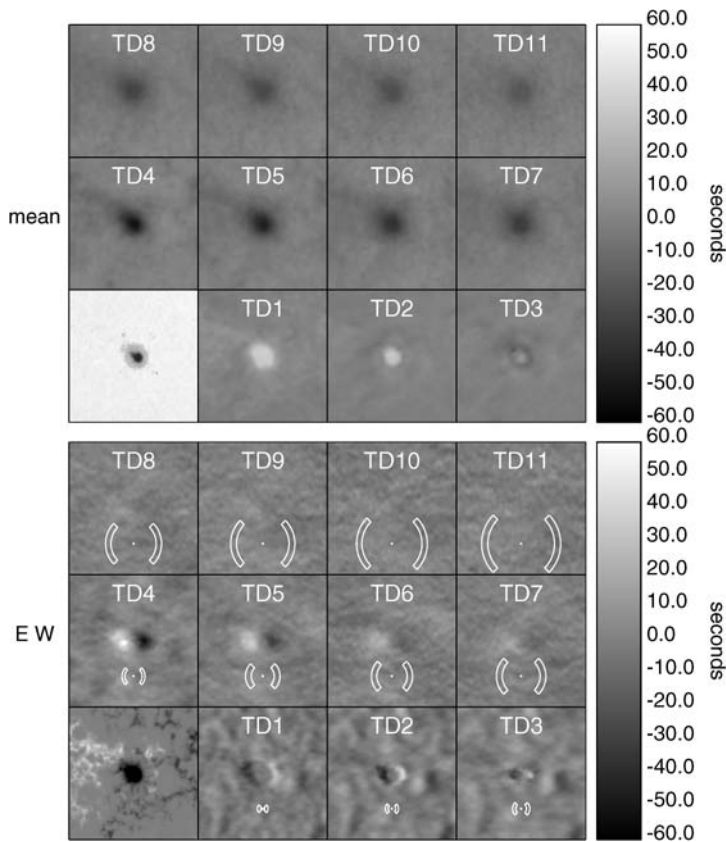


Fig. 6 Maps of travel-time shifts $\delta\tau_{\text{mean}}$ (*top panels*) and $\delta\tau_{\text{EW}}$ (*bottom panels*) using phase speed filters over a frequency bandpass of 2.5–5.5 mHz for AR 9787 observed over a 24 hour period on 2002 January 24. The labels TD1 through TD11 indicate the phase-speed filter used. Sizes of the East and West pupil quadrants used to measure $\delta\tau_{\text{EW}}$ are shown in the bottom set of panels. The map in the lowest-left position of the top set of panels shows a MDI continuum intensity image while the map in the same position in the bottom set shows a line-of-sight magnetogram of the sunspot in AR 9787. The portion of the region shown here extends 219 Mm on each side. For the purpose of this figure (and the others in this section), some spatial smoothing has been applied to the travel-time maps

full width at half maximum (FWHM) of the squared filter. The EW pupil quadrants for the 11 filters are shown in the bottom set of panels in Fig. 6. All of the phase speed filters used also remove the contribution of the f mode (Braun and Birch 2008).

Figure 6 shows mean and EW travel-time shifts using a frequency bandpass (step 6) between 2.5–5.5 mHz. As is well known, there are distinct patterns of travel-time shifts associated with the use of phase-speed filters. In particular, the mean travel-time shift in the sunspot is positive for the smallest values of phase speed (and mean pupil diameter; e.g. TD1–TD3) and then switches sign for larger phase speeds (TD4 and beyond). The EW travel-time shifts also undergo a similar change of sign. At the smallest (largest) phase speeds, the EW travel-time differences are consistent with inflow-like (outflow-like) perturbations centered on the sunspot. Remarkably, the switch in sign for both the mean shift and the EW differences occurs between filters TD3 and TD4.

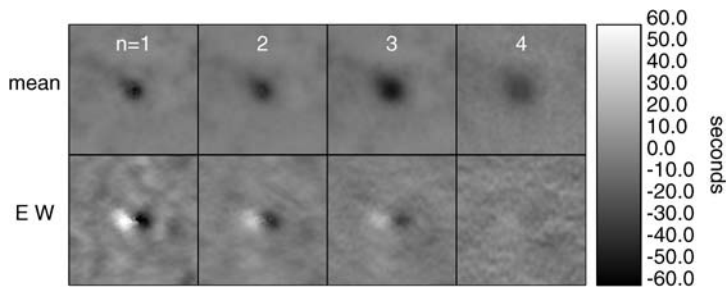


Fig. 7 Maps of travel-time shifts $\delta\tau_{\text{mean}}$ (top panels) and $\delta\tau_{\text{EW}}$ (bottom panels) using ridge filters over a frequency bandpass of 2.5–5.5 mHz for AR 9787 on 2002 January 24. The columns indicate different radial orders as indicated

Figure 7 shows mean and EW travel-time shifts using the same frequency bandpass (2.5–5.5 mHz) as shown in Fig. 6, but obtained with ridge filters isolating the p_1 – p_4 ridges. In contrast with the results obtained using phase-speed filters, ridge filters show values of $\delta\tau_{\text{mean}}$ which are always negative within the sunspot, while $\delta\tau_{\text{EW}}$ is consistent with an outflow-like perturbation. This is similar to results from time–distance analyses as well as previous HH analyses (Braun and Birch 2008).

Motivated by recent studies which show frequency variations of travel-time shifts observed in active regions (Braun and Birch 2006, 2008; Couvidat and Rajaguru 2007), we also employed narrow frequency bandpasses to both the phase-speed and ridge filters. Figure 8 shows mean and EW travel-time shifts using phase-speed filters TD1–TD4 in conjunction with 1-mHz wide frequency filters centered at 2, 3, 4, and 5 mHz. Positive mean travel-time shifts, and EW travel-time differences consistent with inflows, are observed primarily in frequency bandwidths that are centered below the p_1 ridge, shown by the solid line in Fig. 8. There is one instance (filter TD3 at 5 mHz, which lies immediately below the p_2 ridge) which also produces a positive mean shift and inflow-like signature. All other filters (including TD5–TD11 not shown) show negative mean travel-time shifts and outflow-like signatures.

Braun and Birch (2008) find that a condition for producing positive travel-time shifts such as in Fig. 8 appears to be a disproportionate contribution to the correlations of wave power from the low-frequency wing of the p_1 ridge relative to the high-frequency wing. We note that recent work by Moradi et al. (2008) is relevant to these issues.

3.2 Ridge and Off-Ridge Filtering

Following Braun and Birch (2006, 2008) and Thompson and Zharkov (2008), we study the sensitivity to filtering of mean travel-time perturbations measured in the vicinity of isolated sunspot AR 9787 relative to the surrounding quiet Sun, using a centre-to-annulus geometry and a skip distance of 11.7 Mm (Fig. 9). For each row a bandpass filter was used to select data within a 1 mHz frequency band with a 0.1 mHz Gaussian roll-off, centred (from bottom to top) at 2.5, 3.0, 3.5, 4.0, 4.5 and 5.0 mHz. These were combined for each column (left to right) with filters selecting the data from in between f and p_1 ridges, from the p_1 ridge, in between the p_1 and p_2 ridges, and the p_2 ridge. The filters were constructed as follows: at constant frequency we apply a filter that takes the value of unity at the horizontal wavenumber corresponding to either a particular ridge, e.g. p_1 (a “ridge filter”), or a midpoint between the adjacent ridges, e.g. p_1 – p_2 (an “off-ridge filter”). On either side of this

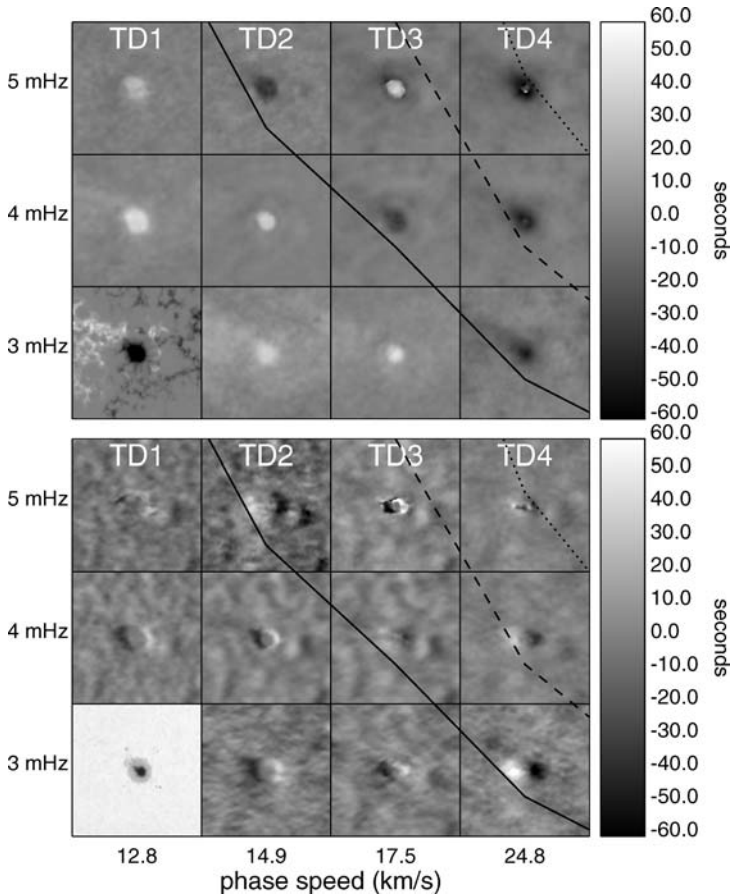


Fig. 8 Maps of travel-time shifts $\delta\tau_{\text{mean}}$ (*top panels*) and $\delta\tau_{\text{EW}}$ (*bottom panels*) using phase speed filters and 1 mHz-wide frequency bandpasses for AR 9787 observed on 2002 January 24. The columns of maps labeled TD1 through TD4 indicate the phase-speed filter used, while the rows indicate the frequency bandpass. The *solid jagged line* running diagonally through the panels connects the location of the p_1 ridge in the ν - w domain for each filter, with the centers of the maps assigned to values of frequency and phase speed as indicated on the left and bottom edges of the plot. The *dashed* and *dotted lines* indicate the locations of the p_2 and p_3 ridges respectively. The map in the lowest-left position of the top set of panels shows a MDI continuum intensity image while the map in the same position in the bottom set shows a line-of-sight magnetogram

centre line the filter has a Gaussian roll-off with half width at half maximum (HWHM) equal to 0.32 times the distance to the neighbouring ridge on that side for the ridge filter and with HWHM equal to 0.63 times the distance to the adjacent ridge in the case of the off-ridge filter. No phase-speed filter was applied.

The cross-correlation functions were estimated using center-to-annulus geometry with annuli taken to be one data pixel wide. Travel-time perturbations were measured using the definition of Gizon and Birch (2004).

In agreement with Braun and Birch (2006, 2008), as illustrated in Fig. 9, we observe a positive travel-time perturbation in the region beneath the p_1 ridge, but we also find such a signal between the p_1 and p_2 ridges, and find that on the p_1 ridge the positive perturbation

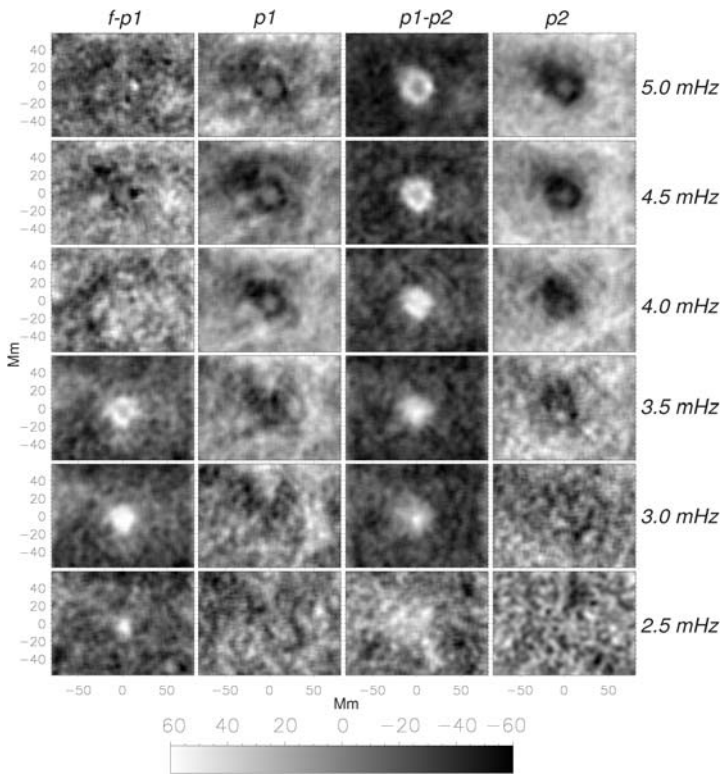


Fig. 9 Travel-time perturbations $\delta \tau_{\text{mean}}$ for isolated sunspot AR 9787 obtained for various filtering schemes. The *colorbar* is in units of seconds. The skip distance is equal to 11.64 Mm. From the left, the columns respectively have filters applied as follows: pass-filter centred between the f and p_1 ridges; pass-filter centred on the p_1 ridge; pass-filter centred between the p_1 and p_2 ridges; pass-filter centred on the p_2 ridge. From the bottom, the rows have bandpass filters centred on 2.5, 3.0, 3.5, 4.0, 4.5, and 5.0 mHz respectively. More details are given in the text

is absent. Our tentative conclusion is that the positive travel-time perturbation signal arises only in the regions between the p -mode ridges; and that the travel-time perturbations associated with the data on the ridges themselves are all consistently negative. Similar, though noisier, results were obtained for the Gabor-wavelet fitting travel-time definition. The data appear to suggest that measured travel-time perturbations are very sensitive to the part of the wave-propagation diagram selected during the filtering stage.

4 Moat Flow Inversion (Ridge Filters)

Here we invert travel times to obtain the flows around the sunspot in AR 9787. We restrict ourselves to ridge filtering and TD travel times. We then compare the inferred flows with the velocities of the moving magnetic features (MMFs) in the moat (Sect. 2.1).

The details of the travel-time inversion can be found in Jackiewicz et al. (2008). In summary, we measure center-to-quadrant travel-time differences using the method of Gizon and Birch (2004), after correcting for reduced power in magnetic regions. The travel times are obtained for the f ridge and the p_1 to p_4 ridges, separately. For all five ridges, the east–west

travel-time differences are consistent with an outflow from the center of the sunspot. Using the same definition of travel times, Born sensitivity kernels are computed (Birch and Gizon 2007). We input the travel times and the sensitivity functions, as well as the covariance of the travel times, into a three-dimensional subtractive optimally localised averages (SOLA) inversion procedure to infer the vector flows at several depths. The procedure also provides good estimations of the resolution and the noise levels, which are important for any interpretation. We note that neither the modeling nor the inversion takes into account the magnetic field.

We have inverted the middle seven days of data from the nine day set. We obtain flow maps for several depths, extending down to about 5 Mm beneath the surface. In Fig. 10 we compare the inversion results near the surface (left column) to the motion of the moving magnetic features (MMFs, right column). For both sets of maps, the flows are averaged over 7 days. Furthermore, they are approximately of the same horizontal resolution (~ 6 Mm). For this particular figure, we choose to study the inferred time–distance flows taken at a depth as near to the surface as we can achieve, about 1 Mm below.

The bottom row of Fig. 10 compares the radial velocities derived from TD helioseismology and MMF tracking. We see for each case quite clearly a strong outflow extending beyond the penumbra (20 Mm) of several hundred m/s, known as the moat flow. The overall features of the flows from both methods are quite similar, even the slight ‘knob’ on the northeast quadrant of the sunspot moat. A look in the quiet Sun reveals other similarities. The correlation coefficient between the two maps is about 0.65. The magnitude of the TD surface flows is about 20% less than that revealed by MMF tracking. This can be due to many factors, such as the implied depth at which we are comparing not being equal, inaccurate travel-time sensitivity kernels, or the magnetic field affecting the inversion results through the travel times, among others. The estimated noise in the time–distance maps is about 5 m/s. These results are consistent with a previous f -mode TD study of sunspot moat flows (Gizon et al. 2000).

Since the sunspot is very nearly circular, we may average the radial flows azimuthally about the sunspot center. In Fig. 11 we plot the azimuthally-averaged radial flows for several depths versus the distance from the center of the sunspot. Also shown for comparison is the averaged MMF velocity. The moat flow, which extends to about 45 Mm, is seen at all depths. The inferred flows get stronger with depth and begins to level off in strength at about 4.5 Mm below the surface. The MMF velocity is consistent with these flows at depths of between 1 and 2.6 Mm beneath the surface. The variations of the moat flow as a function of radial distance is similar for all cases.

5 Sound Speed versus Wave Speed

The sound speed, c , is the speed of sound. In this paper we make an important distinction between c and the speed at which waves are inferred to have travelled under the assumptions of the helioseismic inversions. Different inversions will include different physics. A common example is the assumption that a travel-time perturbation associated with a sunspot can be modelled purely by an equivalent small-amplitude sound-speed perturbation. The sound-speed inferred under such an assumption is at best a local wave speed, and need not even reflect the sign of the sound speed perturbation. For this reason, we use the notation c_w to denote the inferred wave speed.

Lin et al. (2008) studied the meaning of c_w in the case of ring-diagram analysis. They find that their inversions return perturbations in $c_w^2 = \Gamma_1 P_{\text{tot}}/\rho$, where $P_{\text{tot}} = P + P_{\text{mag}}$ is the

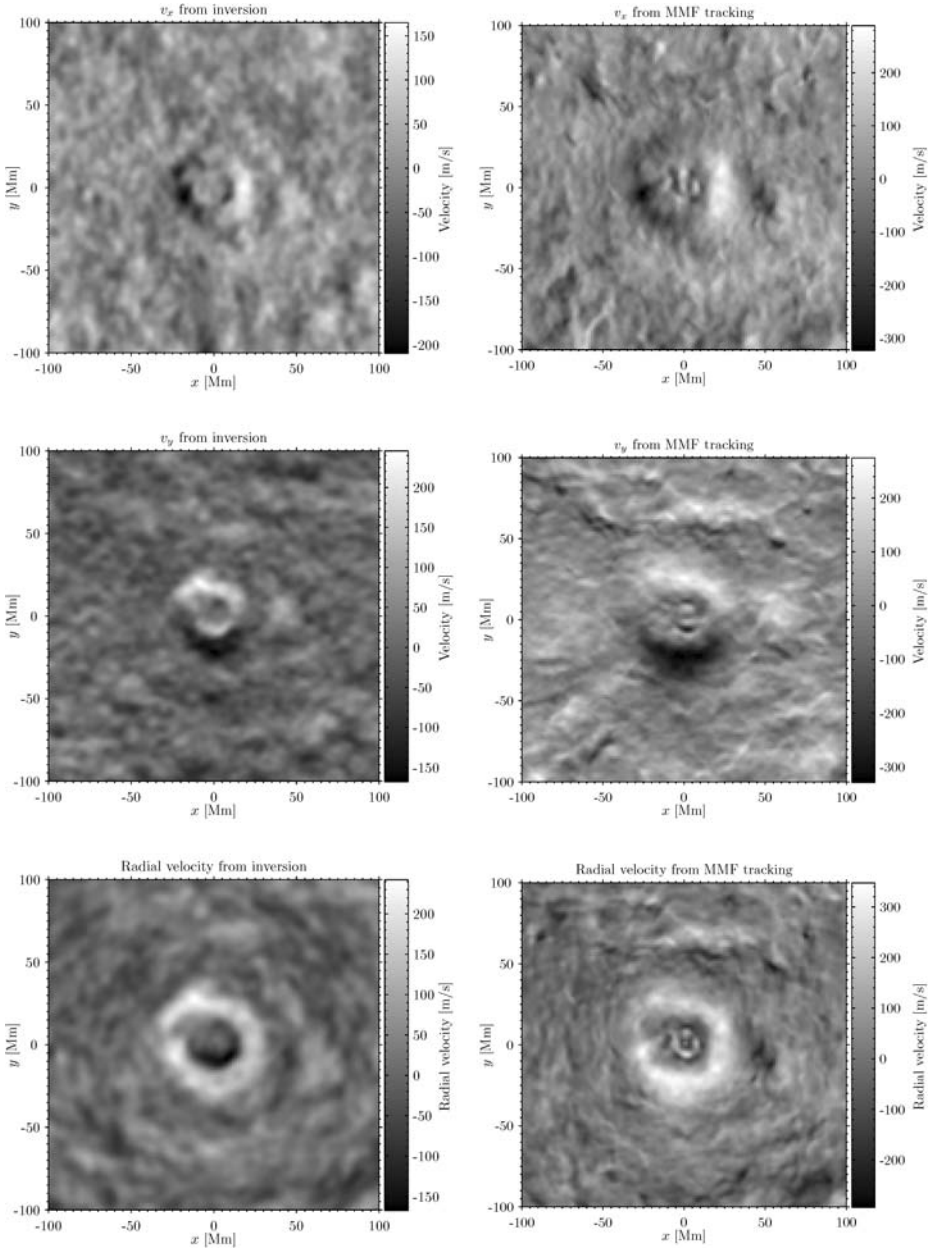


Fig. 10 Comparison of near-surface flows around the sunspot from time–distance inversions and MMF tracking. The time–distance analysis uses five ridge filters (f and p_1 to p_4). The *left column* shows flows obtained from inversions at a depth of 1 Mm beneath the surface and averaged over 7 days. The *right column* are the flows obtained from MMF tracking averaged over the same 7 days. Each set of flows was obtained with approximately the same resolution/smoothing per pixel. The *top row* is the x component of the velocity, and the *middle row* shows the y component of the velocity. The *bottom row* compares the radial velocity (from the center of the sunspot) of the two measurements. An outward moat flow is seen for each case

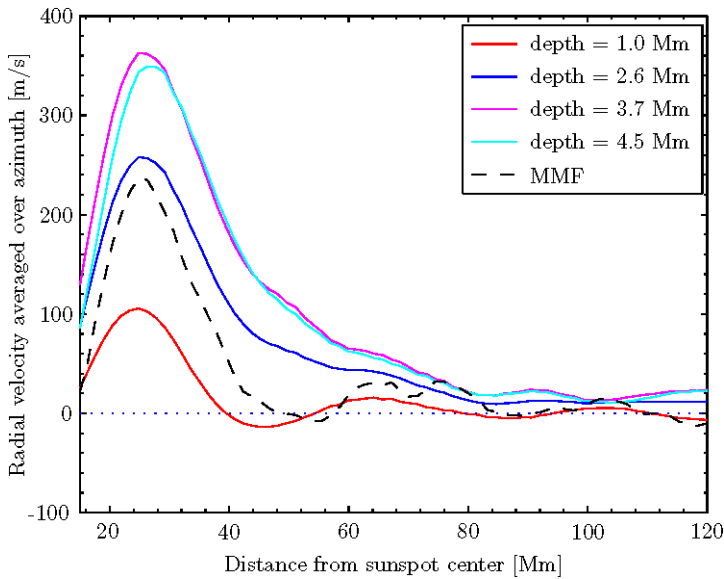


Fig. 11 Azimuthally-averaged radial flows from the sunspot center at different depths over 7 days, obtained from a time–distance inversion using ridge filtering. The radial velocity from the MMF tracking is shown by the *dashed line*. In this plot only the region from the edge of the penumbra outward is shown. The results within the sunspot (distance less than 20 Mm) cannot be reliably interpreted

sum of the gas and magnetic pressures. The inferred wave speed c_w has two components: the sound speed, c , and a magnetic component.

What we have said about sound speed versus wave speed, also applies to any chosen physical quantity versus inferred quantity. For example, the next section presents an inversion for wave slowness, $s_w = 1/c_w$, using traveltime sensitivity kernels for inverse sound speed $s = 1/c$.

6 Wave-Speed Inversion (Phase-Speed Filters)

The data was reduced using standard time–distance helioseismology techniques. First, the data was preprocessed by applying an amplitude modulation correction as described by Rajaguru et al. (2006), followed by applying a high-pass filter at 1.7 mHz in order to remove the supergranulation and a low-pass filter at 5.1 mHz to remove signal above the acoustic cut-off frequency. We then apply a Gaussian phase speed filter to select waves with horizontal phase speed w_i near the value corresponding to skip distance Δ_i given by ray theory. We define 12 such filters F_i corresponding to different distances Δ_i . These phase-speed filters are similar to the set of filters used in Sect. 3.1 and commonly used in time–distance analyses. Each filter is applied by pointwise multiplication of the Fourier transform $\psi(k_x, k_y, \omega)$ of the observed velocity data.

We use a centre-to-annulus geometry to compute the cross-covariance $C(\mathbf{r}, \Delta_i, t)$, where \mathbf{r} is the center of the annulus and t is the time lag. The annulus width is 4.5 Mm. A reference cross-covariance function, C^{ref} , is obtained by spatial averaging C over a quiet Sun area. Wave travel times are then extracted by fitting a Gabor wavelet to the positive- and negative-time branches of C (Kosovichev and Duvall Jr. 1997). The wavelet has five parameters:

the central frequency, the width and amplitude of the envelope, and the group and phase travel times. We denote by τ_+ and τ_- the measured phase travel times for the positive- and negative-time branches of C respectively. The reference travel times for the quiet Sun are similarly defined using C^{ref} . The phase travel time perturbations, $\delta\tau_+$ and $\delta\tau_-$, are defined as the difference between the measured and reference travel times. As we are interested in wave-speed perturbations only, we consider mean travel-time perturbations, $\delta\tau_{\text{mean}} = (\delta\tau_+ + \delta\tau_-)/2$.

For the forward problem we use sensitivity kernels estimated using the first-order Rytov approximation (Jensen and Pijpers 2003). These kernels, K^s , relate mean travel-time perturbations, $\delta\tau_{\text{mean}}$, to inverse sound speed perturbations, $\delta s = \delta(1/c)$, of a quiet-Sun model. In the sunspot region, we have

$$\delta\tau_{\text{mean}}(\mathbf{r}, \Delta_i) = \int_S d^2\mathbf{r}' \int_{-d}^0 dz K^s(\mathbf{r} - \mathbf{r}', z; \Delta_i) \delta s_w(\mathbf{r}', z), \tag{9}$$

where S is the area of the region, d is its depth. The quantity $\delta s_w = s_w - s$ is the equivalent change in the local wave slowness caused by the sunspot.

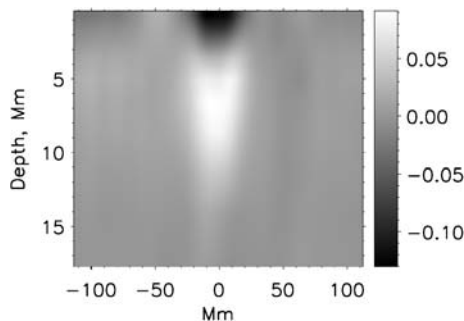
We invert for $N = 14$ layers in depth located at $[z_1, \dots, z_N] = [0.36, 1.2, 2.1, 3.3, 4.7, 6.4, 8.6, 11.2, 14.3, 17.8, 21.8, 26.3, 31.4, 37.0]$ Mm. We use a multi-channel deconvolution algorithm (Jensen et al. 1998, 2001) enhanced by the addition of horizontal regularisation (Couvidat et al. 2006). The above equation is Fourier transformed with respect to two-dimensional position \mathbf{r} . For each wavevector \mathbf{k} , we define $d_i = \delta\tau(\mathbf{k}, \Delta_i)$, $G_{ij} = K(\mathbf{k}, z_j; \Delta_i)$, and $m_j = \delta s(\mathbf{k}, z_j)$, and the corresponding vector \mathbf{d} , matrix G , and vector \mathbf{m} . Then for each \mathbf{k} we solve for the vector \mathbf{m} that minimises

$$\|(\mathbf{d} - G\mathbf{m})\|^2 + \epsilon \|L\mathbf{m}\|^2, \tag{10}$$

where L is a regularisation operator and $\epsilon(\mathbf{k})$ is a positive regularisation parameter. In this work we apply more regularisation at larger depths, to which travel times are less sensitive, by setting $L = \text{diag}(c_1, c_2, \dots, c_N)$, where $c_j = c(z_j)$ is the sound speed in the j -th layer of the reference model. We regularise small horizontal scales by taking $\epsilon(\mathbf{k}) = 2 \times 10^3 (1 + |\mathbf{k}|^2)^{100}$.

Figure 12 shows the result of the inversion, expressed in terms of the relative wave-speed perturbation $\delta c_w/c$. We see a two-layer structure: a region of decreased wave speed (down by -13%) situated directly underneath the surface and a region of increased wave speed (up to 9%) starting from a depth of approximately 3 Mm. This is consistent with other time-distance inversions of travel times using phase-speed filters, e.g., those of Kosovichev et al. (2000).

Fig. 12 Relative wave speed perturbation, $\delta c_w/c$, obtained for AR 9787 using time-distance helioseismology and phase speed filtering



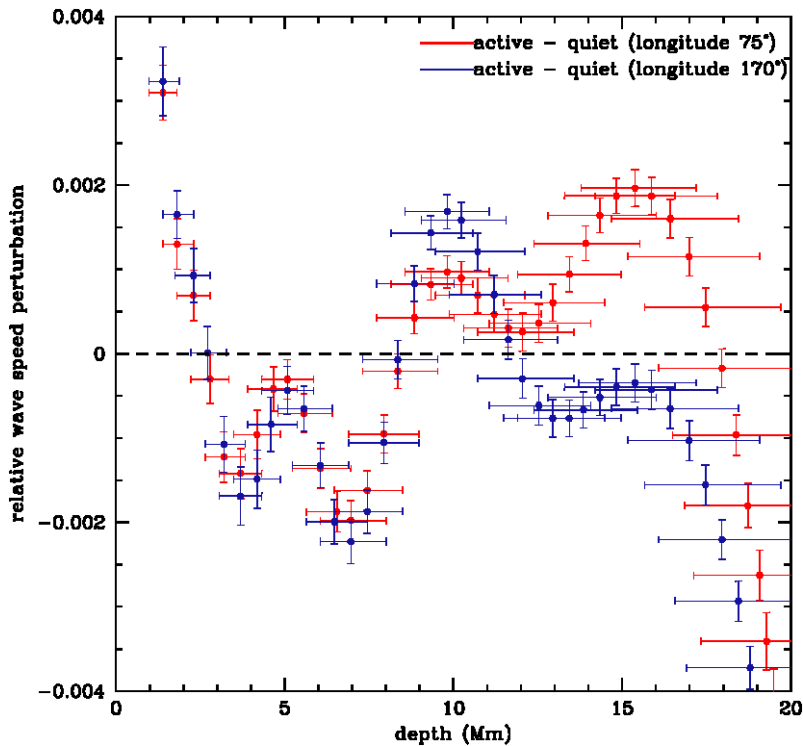


Fig. 13 SOLA inversions for the depth dependence of the relative difference in wave speed, $\delta c_w/c$, between the region around AR 9787 and each of two comparison quiet regions at the same latitude but different longitudes. The inversions are based on fits to power spectra for 5.7 days of tracked data for each region. The differences are in the sense $\delta c_w = c_{w,\text{active}} - c_{w,\text{quiet}}$. The active region is seen to have a positive wave-speed anomaly very near the surface relative to the quiet regions

7 Ring-Diagram Analysis

We have used ring diagrams to analyse the mean structure of the region containing AR 9787 compared with quiet-Sun structure. To do so, we use the techniques described in Basu et al. (2004). We invert the differences in the ring-diagram fit parameters between the spectra of the active region and those of suitable selected quiet-Sun regions. In this case, two quiet-Sun regions were chosen at the same latitude as that of the active region (-7°) and at Carrington longitudes 170° and 75° (the active region is at longitude 130°). Each region is independently tracked in a time interval of 5.7 days centered on its central meridian crossing, so any geometrical differences in the spectra due to foreshortening or geometric image distortion are very nearly cancelled out. The regions chosen for analysis are 15° in diameter, so the results apply to a spatial mean over these areas (with an unknown weighting function). The average results from the two comparison regions is shown in Fig. 13. It is clear that there is a region of negative wave-speed anomaly under the active region between 3 Mm and 8 Mm in depth, with a turnover to positive wave-speed anomalies both above and below this region, and yet another turnover to negative anomalies at depths greater than about 17 Mm. This behaviour is typical of that seen for other active regions (Bogart et al. 2008), although the changes at the surface and deeper than 17 Mm are unusually pronounced in this case.

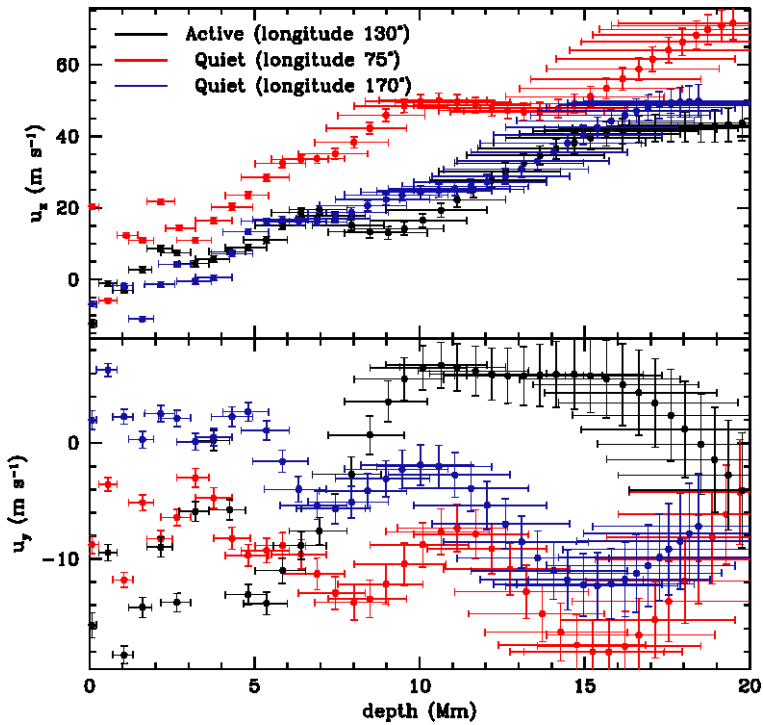


Fig. 14 SOLA inversions for the depth dependence of the mean zonal (v_x) and meridional (v_y) flows over each of the three regions analysed with ring-diagram analysis. The zonal rates are relative to the tracking velocity, which was 54 m/s less than the Carrington rate at this latitude

We can also infer the mean flow speeds at depth for the active regions and the comparison quiet regions directly from the fitted parameters to the ring-diagram spectra. These are shown in Fig. 14. There is no evident anomalous zonal flow through the active region; indeed, the zonal flow structure is remarkably similar to that of the preceding comparison region at longitude 170°. There does appear to be an anomaly in the structure of the meridional flow, however, with a substantial shear at depths greater than 7 Mm, the flow being poleward near the surface (the region is in the southern hemisphere) and equatorward at greater depths. It is especially marked if the mean meridional velocity at the active region's latitude is negative at depth, as the two comparison regions suggest, but this needs to be verified by averaging over more longitudes.

8 Numerical Forward Modeling

In various circumstances it has been shown that the cross-covariance is closely related to the Green's function. This allows us to characterise the interaction of arbitrary wavepackets with the sunspot from the MDI observations. The sunspot discussed in this paper, being observed over nine days and almost axisymmetric, is ideally suited to such a study. In preliminary work, Cameron et al. (2008) considered the cross-covariance between the Doppler signal averaged along a great circle 40 Mm from the centre of the sunspot and the Doppler signal at each point in a region surrounding the sunspot. The data had been f -mode ridge filtered.

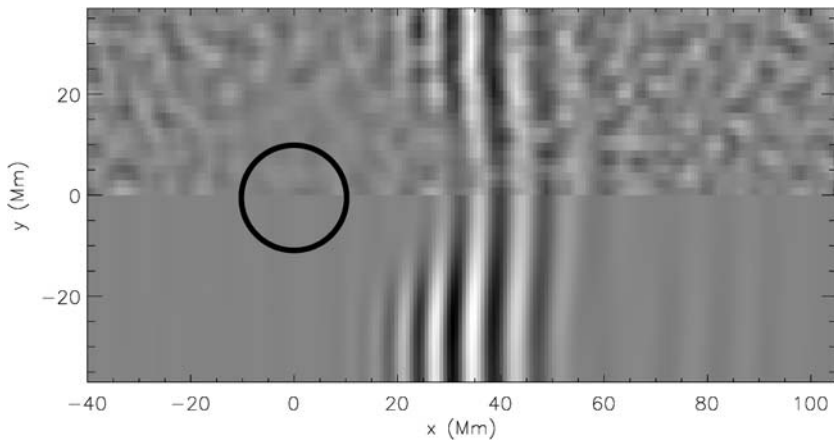


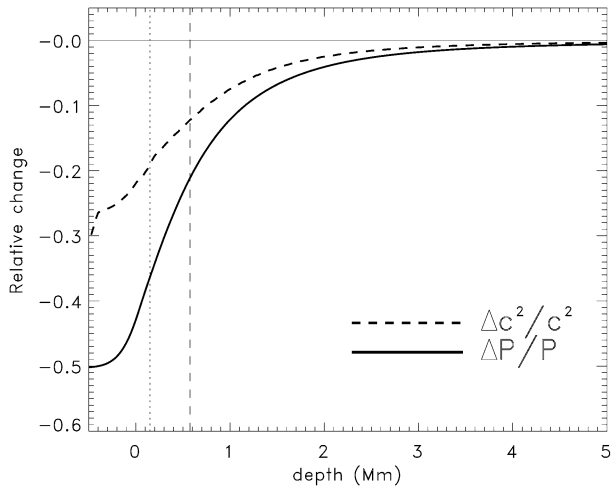
Fig. 15 Comparison between the observed cross-covariance and a numerical simulation. The *circle* indicates the location of the sunspot in AR 9787. (*Top half*) f -mode cross-covariance between the MDI Doppler signal averaged over a line at $x = -40$ Mm and the Doppler signal at each point. The correlation time-lag is 130 min, large enough for wave packets to traverse the sunspot. The cross-covariance is averaged over 9 days and uses the assumed azimuthal symmetry of the sunspot to reduce noise. (*Bottom half*) SLiM numerical simulation of an f -mode wave packet propagating in the $+x$ direction through a model of AR 9787 with a peak magnetic field of 3 kG. (From Cameron et al. 2008)

A numerical simulation was then performed of the propagation an f -mode plane wave packet beginning 40 Mm from a model sunspot. The background atmosphere is Model S of Christensen-Dalsgaard et al. (1996), stabilised with respect to convection. The sunspot model used was a simple self-similar model in the vein of Schlüter and Temesváry (1958). The half-width of the vertical magnetic field at the surface was taken to be 10 Mm (as in AR 9787) and field strengths of 2000, 2500 and 3000 G were considered. The SLiM code (Cameron et al. 2007) was used to perform the simulations.

The top half of Fig. 15 shows the observed cross-correlation with time-lag 130 min. The bottom half of the figure shows the results of the simulation at time 130 min. The match between the observations and simulation is quite good, in this case for a sunspot with a peak field strength of 3000 G. The match was not as good for peak field strengths of 2000 G and 2500 G. This then places a helioseismic constraint on the magnetic field of the spot. Whereas this constraint makes sense, it cannot be assessed directly using MDI magnetograms, which are not reliable in sunspot umbrae. The partial absorption of the waves (reduced cross-covariance amplitude) was explained in terms of mode conversion into slow magneto-acoustic waves that propagate down the sunspot, as predicted by, e.g., Cally (2000). Full details of this work are given in Cameron et al. (2008).

For the 3 kG sunspot model, Fig. 16 shows the relative change in the gas pressure and the square of the sound speed along the sunspot axis with respect to the quiet Sun model. Both perturbations become very small (less than 1%) deeper than a depth of about 4 Mm. The temperature, closely related to the squared sound speed, is reduced at all depths within the sunspot. At the surface the relative decrease in temperature is around 18%. The reduction in gas pressure is larger with a 36% decrease. The vertical dashed line indicates that the sound speed is equal to the Alfvén speed ($c = a$) at a depth of approximately 580 km. The $c = a$ level is where mode conversion is expected to occur. We also plot the depth at which the sound speed is equal to the surface quiet-Sun sound speed. This gives a rough indication of the Wilson depression, in this case a rather low 170 km.

Fig. 16 Structure of the 3 kG sunspot model used in the simulation of Fig. 15. The *thick solid curve* shows the relative change in gas pressure, P , with respect to the quiet Sun, measured along the sunspot axis. The *thick dashed curve* shows the relative change in the squared sound speed, c^2 , which is also an estimate of the relative change in temperature. The *vertical dashed line* indicates the depth at which the sound speed and the Alfvén velocity are equal. The *vertical dotted line* indicates the depth at which the sound speed is equal to its zero-depth quiet-Sun value



9 Discussion: The Elusive Structure of Sunspots

9.1 Problematic Travel Times

Here we use Born approximation based forward modeling to test if the flows estimated from inversions of the travel-times obtained using ridge filters (Sect. 4) are consistent with the travel-times measured using phase-speed filters (Sect. 3).

To carry out the forward modeling we employ sensitivity functions, kernels, computed using the method of Birch and Gizon (2007). The calculations account for both the phase-speed filters and pupil sizes used for the measurements described in Sect. 3. The resulting kernels, \mathbf{K}^v , relate three-dimensional steady flows, \mathbf{v} , to predictions for the EW travel-times differences,

$$\delta\tau_{EW}(\mathbf{r}, \Delta) = \int d^2\mathbf{r}' dz \mathbf{K}^v(\mathbf{r}' - \mathbf{r}, z, \Delta) \cdot \mathbf{v}(\mathbf{r}', z) \tag{11}$$

where \mathbf{r} and \mathbf{r}' are two-dimensional position vectors and z is depth. Both the kernel functions and the flow are vector-valued functions of horizontal position and depth. The travel-time differences are functions of horizontal position and also the pupil size Δ (notice that for each pupil size there is a corresponding phase-speed filter, see Sect. 3).

We assume \mathbf{v} to be given by the flow field inferred from the inversions of the ridge-filtered travel-time differences shown in Sect. 4. We neglect the effects of vertical flows as inversions for depth-dependent vertical flows have not yet been carried out.

Figure 17 compares measurements and forward models of EW travel-time differences for the cases of phase-speed filters TD1 and TD4. For the case of the filter TD1, the forward model is in qualitative agreement with the measurements in the quiet Sun. However, the forward model predicts a signature of the moat flow with opposite sign to that seen in the observations. This shows that the travel-time differences measured using phase-speed filter TD1 and those measured using ridge-filtered travel-times do not yield a consistent picture of the moat flow. Figure 17 also shows the case of measurements and forward modeling for phase-speed filter TD4. In this case, and for other filters with large phase speeds, there is qualitative agreement even in the moat.

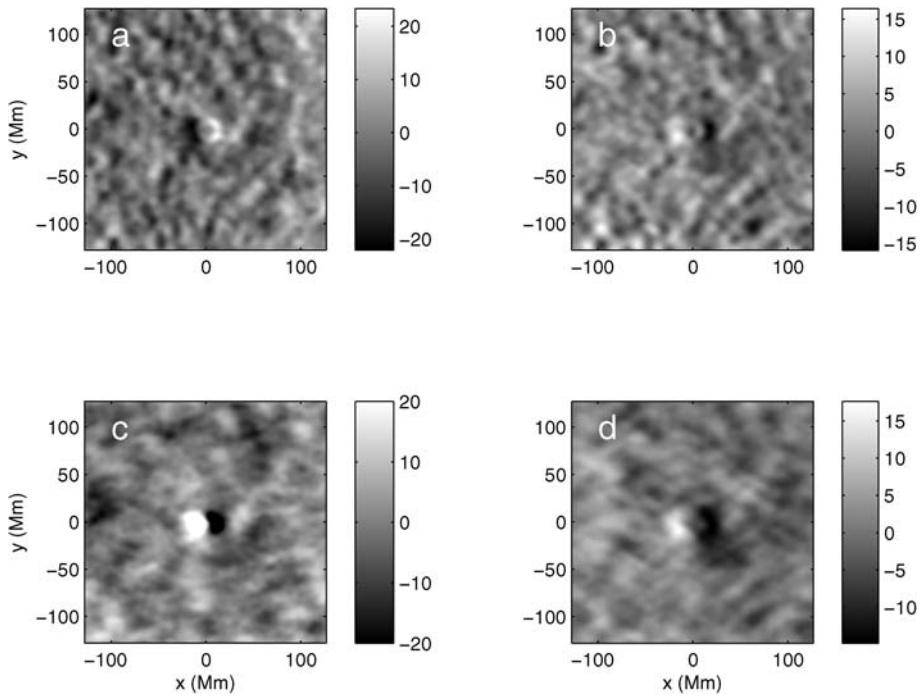


Fig. 17 Measured EW travel-time differences for phase-speed filters TD1 (panel **a**), and TD4 (panel **c**), and the corresponding modeled travel times (panels **b** and **d**) for 25 January 2002. The travel-time measurements are described in Sect. 3 and have been smoothed with a Gaussian filter with FWHM of 6.7 pixels. The *gray scales* are shown in units of seconds and have been truncated to make the details more visible. The sunspot is centered at roughly $(x, y) = (0, 0)$. Notice that the forward model is able to reproduce the moat flow for the filter TD4, but not for the case of TD1

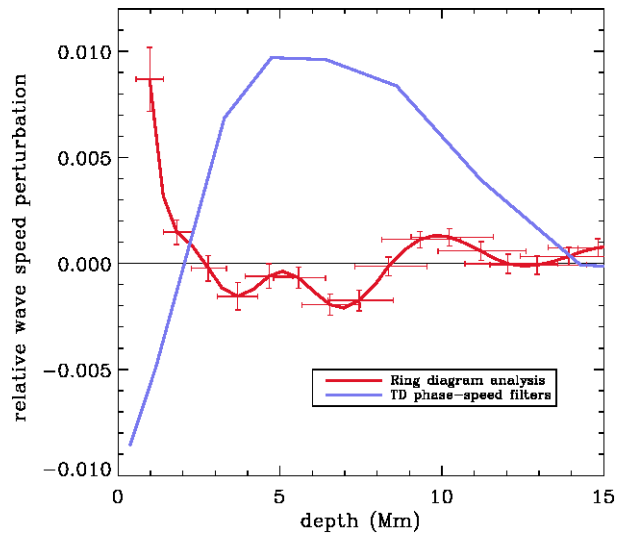
One possible reason for the disagreements could be that the travel-time sensitivity kernels rely on an imperfect model of the power spectrum of solar oscillations. For example, the model zero-order power spectrum does not include background noise and mode linewidths may not be accurate enough.

We also emphasise that a number of assumptions have been made in carrying out the forward modeling shown in Fig. 17. It is known (e.g., Gizon and Birch 2002; Parchevsky et al. 2008; Hanasoge et al. 2007) that the reduction in the wave generation rate in sunspots can, in general, produce apparent travel-time differences. For the case of phase-speed filtered travel-time differences this effect has a magnitude of up to 10 s (Hanasoge et al. 2007). The magnitude of this effect is not known for travel-times measured using ridge filters. Similarly, wave damping in sunspots can also produce travel-time differences (e.g., Woodard 1997; Gizon and Birch 2002). The magnitude of this effect has not been carefully estimated for realistic models of wave absorption in sunspots. In addition, radiative transfer effects can cause phase shifts in sunspots (e.g., Rajaguru et al. 2007).

9.2 Conflicting Wave-Speed Profiles

Here we compare the wave-speed inversions from ring analysis (Sect. 7) and from time–distance helioseismology with phase-speed filters (Sect. 6). To make this comparison possible, we average the TD wave-speed inversion over a disk of 15° diameter centered on the

Fig. 18 Comparison of two different helioseismic methods used to infer wave speed perturbations below AR 9787 ($\delta c_w/c$). The red curve shows the averaged ring-diagram results from Fig. 13. The solid blue curve shows the time–distance result (phase-speed filters) from Fig. 12, after averaging over the area used for ring analysis. Although they are meant to represent the same quantity, these two curves are noticeably different



sunspot, which represents the area used for ring analysis. The two wave-speed profiles are plotted as a function of depth in Fig. 18. Clearly, they do not match.

How can we explain such a strong disagreement? As already mentioned in Sects. 3 and 9.1, the details of the measurement procedures are important for the interpretation of the helioseismic observations; they may not have been fully taken into account in one or possibly both inversions. Although we have not done a TD inversion for wave speed using ridge filters, it is likely that it would give a different answer than the TD inversion using phase-speed filters, thus adding a third curve to Fig. 18.

We also note that both inversions suppose that first-order perturbation theory is valid to describe the effect of sunspots on waves. Unlike the flow perturbation, however, the perturbations in pressure and density introduced by the sunspot are not small with respect to the quiet-Sun background. Thus the concept of linear inversions is not necessarily correct for sunspots and regions of strong magnetic field. In addition, it is perhaps too naive to model the combined effects of the magnetic field in terms of an equivalent sound-speed perturbation. Ring-diagram inversions do include a contribution from changes in the first adiabatic exponent, but the direct effect of the magnetic field through the Lorentz force is not fully accounted for in either inversion. We note that the ring-diagram inversions include a treatment of near-surface effects which is different than in the TD inversions.

10 Conclusion

We have studied the sunspot in AR 9787 with several methods of local helioseismology. We have characterised the acoustic wave field near the sunspot and the surrounding plage, measured acoustic absorption by the sunspot, and showed maps of the signature of AR 9787 on the farside of the Sun. We have shown that the sunspot leaves a strong signature in the observed wave field, as evidenced by strong perturbations in travel times and frequency shifts. The interpretation of the observations, however, is difficult and we have not been able to draw an unequivocal conclusion about the subsurface structure and dynamics of

the sunspot. We have shown that one complication is the extreme sensitivity of helioseismic measurements to the choice of data analysis procedure, such as filtering in frequency-wavenumber space. In addition, our understanding of the effects of strong magnetic fields on solar oscillations is still incomplete.

On the positive side, we note that the seismically determined moat flow (TD and ridge filters) appears to be consistent with the motion of the MMFs in magnetograms. It is also clear that numerical simulations of wave propagation through model sunspots promise to provide invaluable help in interpreting the observations.

Acknowledgements This work was initiated at the second HELAS local helioseismology workshop held in Freiburg on 7–11 January 2008 and continued during the ISSI Workshop on the Origin and Dynamics of Solar Magnetism held in Bern on 21–25 January 2008. Financial support from project HELAS (European Union FP6), ISSI, project GDC-SDO (Deutsches Zentrum für Luft- und Raumfahrt), and project SISI (European Research Council) is acknowledged. SOHO is a mission of international cooperation between ESA and NASA.

Open Access This article is distributed under the terms of the Creative Commons Attribution Noncommercial License which permits any noncommercial use, distribution, and reproduction in any medium, provided the original author(s) and source are credited.

References

- H.M. Antia, S. Basu, *Astron. Nachr.* **328**, 257 (2007)
 S. Basu, H.M. Antia, R.S. Bogart, *Astrophys. J.* **610**, 1157 (2004)
 A.C. Birch, L. Gizon, *Astron. Nachr.* **328**, 228 (2007)
 R.S. Bogart, S. Basu, M.C. Rabello-Soares, H.M. Antia, *Sol. Phys.* **251**, 439 (2008)
 T.J. Bogdan, F. Cattaneo, A. Malagoli, *Astrophys. J.* **407**, 316 (1993)
 D.C. Braun, *Astrophys. J.* **451**, 859 (1995)
 D.C. Braun, *Astrophys. J.* **487**, 447 (1997)
 D.C. Braun, A.C. Birch, *Astrophys. J.* **647**, 187 (2006)
 D.C. Braun, A.C. Birch, *Sol. Phys.* **251**, 267 (2008)
 D.C. Braun, C. Lindsey, *Sol. Phys.* **192**, 307 (2000)
 D.C. Braun, T.L. Duvall Jr., B.J. Labonte, *Astrophys. J.* **319**, 27 (1987)
 D.C. Braun, T.L. Duvall Jr., B.J. Labonte, *Astrophys. J.* **335**, 1015 (1988)
 D.C. Braun, T.L. Duvall, B.J. Labonte, S.M. Jefferies, J.W. Harvey, M.A. Pomerantz, *Astrophys. J.* **391**, 113–116 (1992a)
 D.C. Braun, C. Lindsey, Y. Fan, S.M. Jefferies, *Astrophys. J.* **392**, 739–745 (1992b)
 N.S. Brickhouse, B.J. Labonte, *Sol. Phys.* **115**, 43–60 (1988)
 P.S. Cally, *Sol. Phys.* **192**, 395 (2000)
 P.S. Cally, A.D. Crouch, D.C. Braun, *Mon. Not. R. Astron. Soc.* **346**, 381 (2003)
 R. Cameron, L. Gizon, K. Daifallah, *Astron. Nachr.* **328**, 313 (2007)
 R. Cameron, L. Gizon, T.L. Duvall Jr., *Sol. Phys.* **251**, 291 (2008)
 J. Christensen-Dalsgaard, W. Dappen, S.V. Ajukov, E.R. Anderson, H.M. Antia, S. Basu, V.A. Baturin, G. Berthomieu, B. Chaboyer, S.M. Chitre, A.N. Cox, P. Demarque, J. Donatowicz, W.A. Dziembowski, M. Gabriel, D.O. Gough, D.B. Guenther, J.A. Guzik, J.W. Harvey, F. Hill, G. Houdek, C.A. Iglesias, A.G. Kosovichev, J.W. Leibacher, P. Morel, C.R. Proffitt, J. Provost, J. Reiter, E.J. Rhodes, F.J. Rogers, I.W. Roxburgh, M.J. Thompson, R.K. Ulrich, *Science* **272**, 1286 (1996)
 S. Couvidat, S.P. Rajaguru, *Astrophys. J.* **661**, 558 (2007)
 S. Couvidat, A.C. Birch, A.G. Kosovichev, *Astrophys. J.* **640**, 516 (2006)
 A.D. Crouch, P.S. Cally, P. Charbonneau, D.C. Braun, M. Desjardins, *Mon. Not. R. Astron. Soc.* **363**, 1188 (2005)
 A.C. Donea, C. Lindsey, D.C. Braun, *Sol. Phys.* **192**, 321 (2000)
 T.L. Duvall Jr., L. Gizon, *Sol. Phys.* **192**, 177 (2000)
 T.L. Duvall Jr., S.M. Jefferies, J.W. Harvey, M.A. Pomerantz, *Nature* **362**, 430 (1993)
 T.L. Duvall Jr., S. D'Silva, S.M. Jefferies, J.W. Harvey, J. Schou, *Nature* **379**, 235 (1996)
 Y. Fan, D.C. Braun, D.Y. Chou, *Astrophys. J.* **451**, 877 (1995)
 L. Gizon, *Mod. Phys. Lett. A* **21**, 1701 (2006)

- L. Gizon, A.C. Birch, *Astrophys. J.* **571**, 966 (2002)
- L. Gizon, A.C. Birch, *Astrophys. J.* **614**, 472 (2004)
- L. Gizon, A.C. Birch, *Living Rev. Sol. Phys.* **2**(6) (2005). <http://www.livingreviews.org/lrsp-2005-6>
- L. Gizon, T.L. Duvall Jr., R.M. Larsen, J. *Astrophys. Astron.* **21**, 339 (2000)
- S.M. Hanasoge, *Astrophys. J.* **680**, 1457 (2008)
- S.M. Hanasoge, S. Couvidat, S.P. Rajaguru, A.C. Birch (2007). [arXiv:0707.1369](https://arxiv.org/abs/0707.1369)
- F. Hill, *Astrophys. J.* **333**, 996 (1988)
- B.W. Hindman, T.M. Brown, *Astrophys. J.* **504**, 1029 (1998)
- J. Jackiewicz, L. Gizon, A.C. Birch, *Sol. Phys.* **251**, 381 (2008)
- J. Jackiewicz, L. Gizon, A.C. Birch, M.J. Thompson, *Astron. Nachr.* **328**, 234 (2007)
- J. Jackiewicz, L. Gizon, A.C. Birch, T.L. Duvall, *Astrophys. J.* **671**, 1051 (2007)
- K. Jahn, in *NATO ASIC Proc. 375: Sunspots. Theory and Observations*, ed. by J.H. Thomas, N.O. Weiss, 1992, pp. 139–162
- J.M. Jensen, F.P. Pijpers, *Astron. Astrophys.* **412**, 257 (2003)
- J.M. Jensen, B.H. Jacobsen, J. Christensen-Dalsgaard, in *Structure and Dynamics of the Interior of the Sun and Sun-Like Stars SOHO6/GONG98*, ed. by S. Korzenik, A. Wilson (ESA Publications Division, Noordwijk, 1998), p. 635
- J.M. Jensen, T.L. Duvall Jr., B.H. Jacobsen, J. Christensen-Dalsgaard, *Astrophys. J.* **553**, 193 (2001)
- A.G. Kosovichev, T.L. Duvall Jr., in *SCORE'96: Solar Convection and Oscillations and Their Relationship*, ed. by F.P. Pijpers, J. Christensen-Dalsgaard, C.S. Rosenthal, *Astrophysics and Space Science Library*, vol. 225, 1997, pp. 241–260
- A.G. Kosovichev, T.L. Duvall Jr., P.H. Scherrer, *Sol. Phys.* **192**, 159 (2000)
- O.V. Ladenkov, F. Hill, S.A. Egamberdiev, D.Y. Chou, *Astron. Lett.* **28**, 411 (2002)
- C.H. Lin, S. Basu, L. Li, *Sol. Phys.* (2008, in press). [arXiv:0809.1427](https://arxiv.org/abs/0809.1427)
- C. Lindsey, D.C. Braun, *Astrophys. J.* **485**, 895 (1997)
- C. Lindsey, D.C. Braun, *Sol. Phys.* **192**, 261 (2000)
- H. Moradi, S.M. Hanasoge, P.S. Cally (2008). [arXiv:0808.3628](https://arxiv.org/abs/0808.3628)
- K. Parchevsky, J. Zhao, A.G. Kosovichev, *Astrophys. J.* **678**, 1498 (2008)
- E.N. Parker, *Astrophys. J.* **230**, 905 (1979)
- S.P. Rajaguru, A.C. Birch, T.L. Duvall Jr., M.J. Thompson, J. Zhao, *Astrophys. J.* **646**, 543 (2006)
- S.P. Rajaguru, K. Sankarasubramanian, R. Wachter, P.H. Scherrer, *Astrophys. J.* **654**, 175 (2007)
- M. Rempel, M. Schüssler, M. Knölker, *Astrophys. J.* (2008). [arXiv:0808.3294](https://arxiv.org/abs/0808.3294)
- A. Schlüter, S. Temesváry, in *Electromagnetic Phenomena in Cosmical Physics*, ed. by B. Lehnert, IAU Symposium, vol. 6, 1958, p. 263
- H. Schunker, P.S. Cally, *Mon. Not. R. Astron. Soc.* **372**, 551 (2006)
- M. Schüssler, M. Rempel, *Astron. Astrophys.* **441**, 337 (2005)
- S.K. Solanki, *Astron. Astrophys. Rev.* **11**, 153 (2003)
- H.C. Spruit, T.J. Bogdan, *Astrophys. J.* **391**, 109 (1992)
- J.H. Thomas, N.O. Weiss, in *NATO ASIC Proc. 375: Sunspots. Theory and Observations*, ed. by J.H. Thomas, N.O. Weiss, 1992, pp. 3–59
- M.J. Thompson, S. Zharkov, *Sol. Phys.* **251**, 225 (2008)
- M.F. Woodard, *Astrophys. J.* **485**, 890 (1997)
- J. Zhao, A.G. Kosovichev, T.L. Duvall, *Astrophys. J.* **557**, 384 (2001)