



---

# *Numerical Simulation of Arc Lightning Plasma*

---

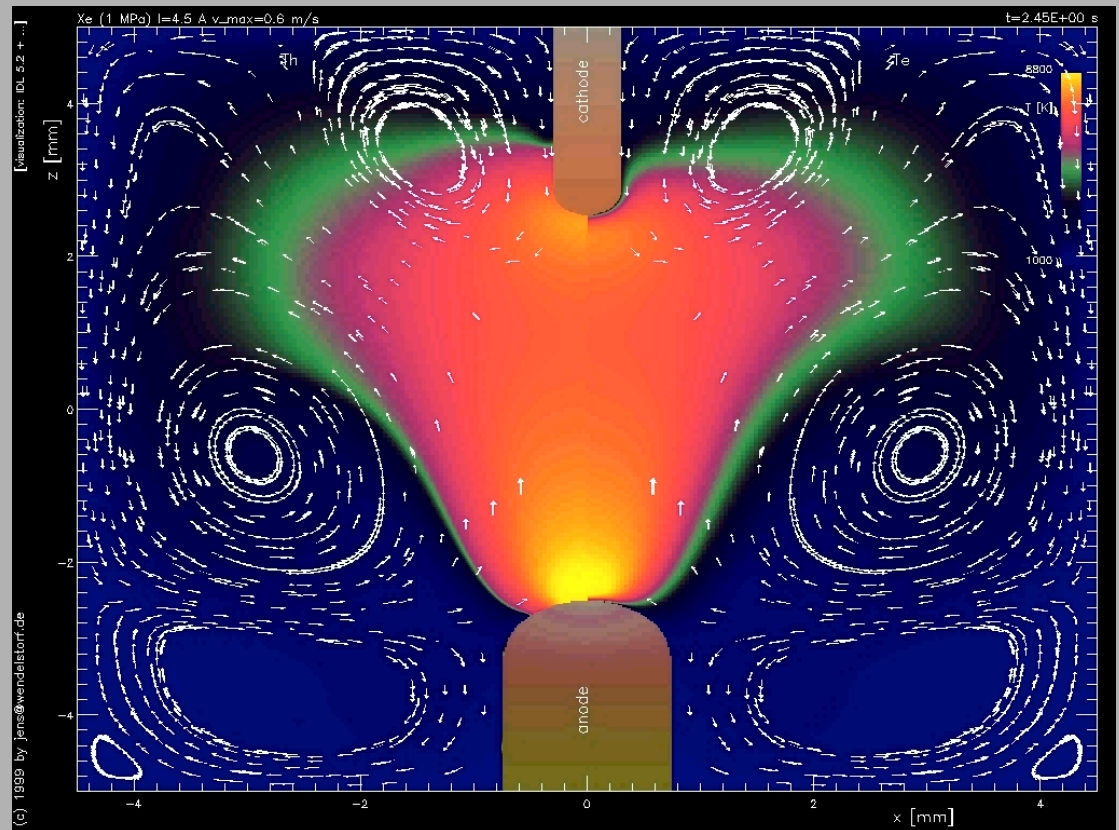


Institute for Theoretical Physics, TU Braunschweig

Institute for Welding Techniques, TU Braunschweig

# *Arc Lightning Plasma*

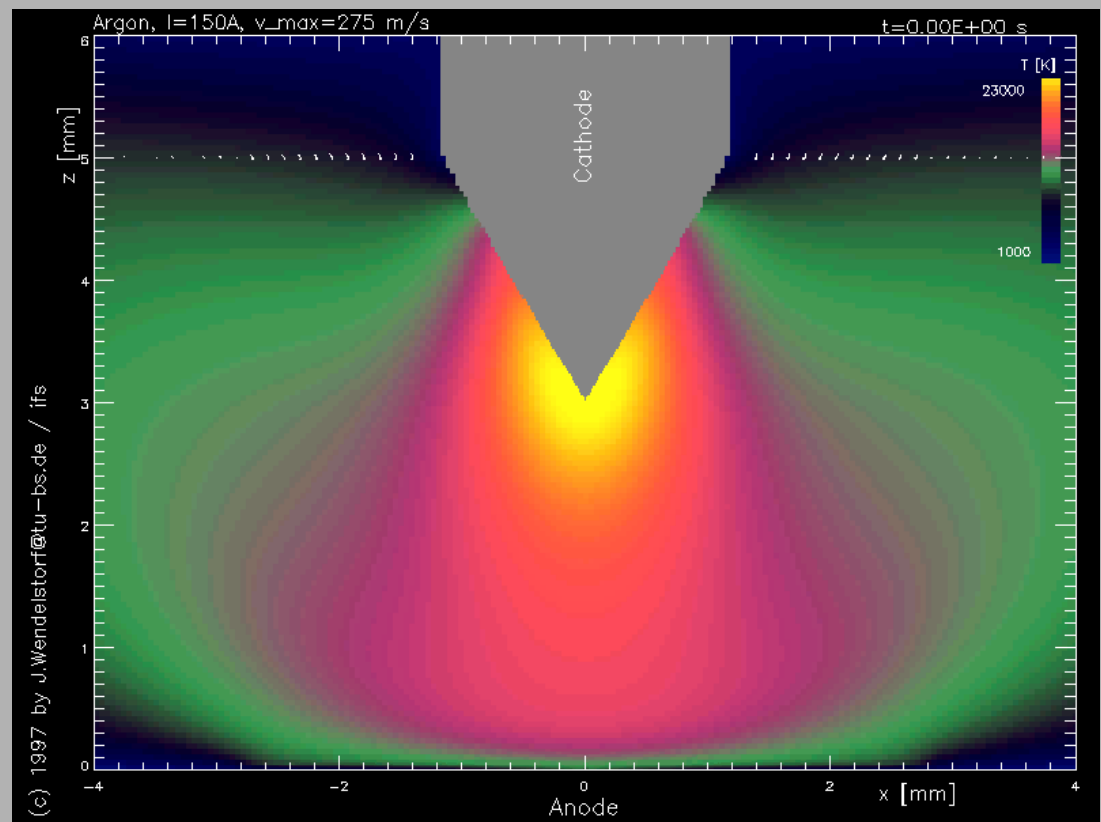
- ◆ Xe lamp
- ◆ 2 component model
- ◆ Fluid description (ions and electrons)



[J. Wendelstorf et al., Diss., TU BS, 2000]

# *Welding Plasma*

- ◆ Hg lamp, Xe lamp
- ◆ 2 component model
- ◆ Fluid description (ions and electrons)



[J. Wendelstorf et al., Diss., TU BS, 2000]